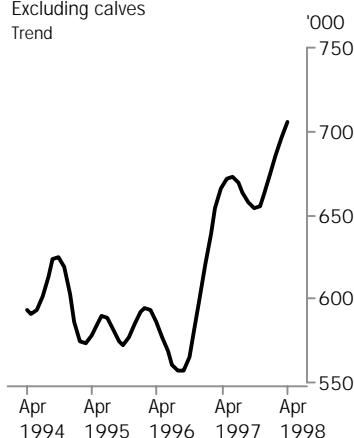


LIVESTOCK PRODUCTS AUSTRALIA

EMBARGO: 11:30AM (CANBERRA TIME) THURS 4 JUNE 1998

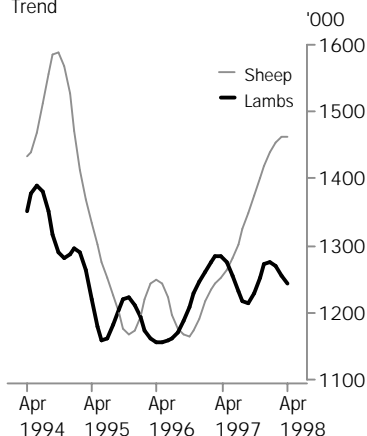
APRIL KEY FIGURES

Cattle slaughtering

Excluding calves
Trend

Sheep and lambs slaughtering

Trend



TREND ESTIMATES

| | Apr 97 '000 | Mar 98 '000 | Apr 98 '000 |
|--------------------|----------------|----------------|----------------|
| Number slaughtered | | | |
| Cattle | 665.4 | 696.6 | 706.1 |
| Calves | 103.7 | 112.1 | 112.8 |
| Sheep | 1 252.7 | 1 461.3 | 1 462.1 |
| Lambs | 1 284.4 | 1 256.1 | 1 243.6 |
| Pigs | 395.7 | 415.4 | 418.9 |
| Chickens | 28 999.2 | 30 865.3 | 30 966.2 |

| | Apr 97 tonnes | Mar 98 tonnes | Apr 98 tonnes |
|----------------|------------------|------------------|------------------|
| Meat produced | | | |
| Beef | 160 560 | 162 578 | 163 803 |
| Veal | 3 323 | 3 889 | 3 949 |
| Mutton | 25 650 | 29 491 | 29 309 |
| Lamb | 23 918 | 23 622 | 23 443 |
| Pig meat | 27 735 | 29 205 | 29 386 |
| Chicken meat | 41 697 | 46 236 | 46 325 |
| Wool receivals | 63 086 | 52 678 | 52 039 |

| | Mar 97 ML | Feb 98 ML | Mar 98 ML |
|--------------------------------|--------------|--------------|--------------|
| Whole milk intake by factories | 750 | 761 | 756 |

APRIL KEY POINTS

TREND ESTIMATES

- The trend estimate for the number of cattle slaughtered in April 1998 was 706,100, a record high.
- The trend estimate for the number of sheep slaughtered in April 1998 was 1.5 million.

SEASONALLY ADJUSTED ESTIMATES

- The seasonally adjusted estimate for cattle slaughtering increased by 7.8% in April and follows a fall of 1.9% in March.
- The seasonally adjusted estimate for sheep slaughtering increased by 1.2% in April and follows a fall of 10.4% in March.

- For further information about these and related statistics, contact Graeme Lakin on 03 6222 5793, or any ABS Office.

NOTES

FORTHCOMING ISSUES

| <i>ISSUE</i> | <i>RELEASE DATE</i> |
|--------------|---------------------|
| May 1998 | 2 July 1998 |
| June 1998 | 4 August 1998 |

CHANGES TO THIS PUBLICATION

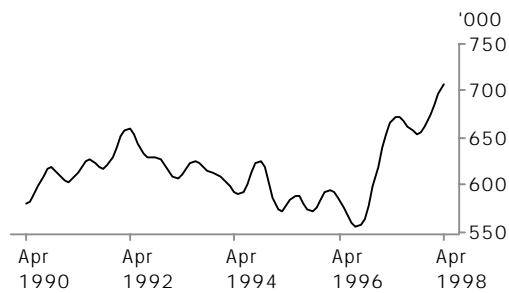
This issue (April 1998) is the second issue of Livestock Products, Australia (Catalogue Number 7215.0) to be published in the new ABS Standard format. For quicker, easier reference, the key figures for all commodities are now listed on the front page, followed by individual graphs which are accompanied by some commentary.

- Table 1 contains the last 13 months of original, seasonally adjusted and trend series estimates at the Australia level for numbers of livestock slaughtered for each animal category.
- Table 2 contains the last 13 months of original, seasonally adjusted and trend series estimates at the Australia level for the types of meat produced, Whole Milk Intake by Factories and Brokers and Dealers Receivals of Taxable Wool.
- Tables 3 to 10 contain original, seasonally adjusted and trend series estimates at the State level for the number of livestock slaughtered for each animal category.
- Table 11 contains the original series data for the number of livestock slaughterings for each animal category by State, for the last three financial years.
- Tables 12 to 18 contain the original, seasonally adjusted and trend estimates for the types of meat produced, at the State level.
- Table 19 contains the original series data for each type of meat produced by State for the last three financial years.
- Tables 20, 21 and 22 contain the original data series for Stocks of Frozen Meat, Exports of Fresh, Frozen and Processed Meat and Exports of Live Sheep and Cattle.
- Table 23 and 24 contain the original, seasonally adjusted and trend series estimates at the State level for Whole Milk Intake by Factories and Market Milk Sales by Factories, respectively.
- Table 25 contains original, seasonally adjusted and trend series estimates at the State level for Brokers and Dealers Receivals of Taxable Wool.
- Table 26 contains the original series for Whole Milk Intake by Factories, Market Milk Sales by Factories and Brokers and Dealers Receivals of Taxable Wool for the last three financial years.
- Sensitivity analysis of each of the trend series for Red Meat, Chicken Meat, Whole Milk Intake by Factories and Wool Receivals is included in pages 33 and 34. Explanatory Notes follow on pages 35 to 37.

W. McLennan
Australian Statistician

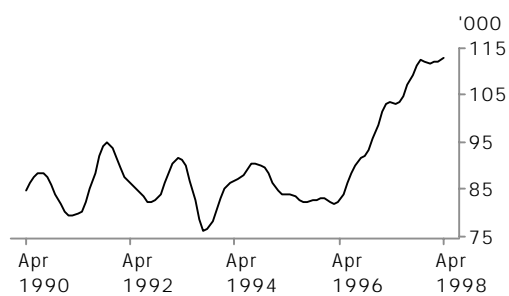
LIVESTOCK SLAUGHTERED: Trend

CATTLE (EXCLUDING CALVES)



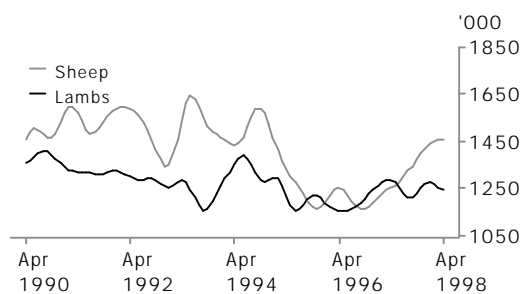
The trend estimate for cattle slaughterings rose by 1.4% to a record high of 706,100. The increases since November 1997 have coincided with the downturn in the live cattle trade to SE Asia, particularly the Philippines and Indonesia, and drought conditions in many parts of eastern Australia.

CALVES



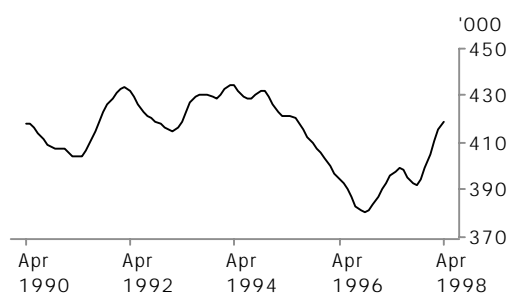
The trend estimate for calf slaughterings rose marginally in April 1998. Continuing increases in slaughterings over the last two years have mirrored those for cattle and also reflect poor pasture conditions and low prices.

SHEEP AND LAMBS



The trend estimate for sheep slaughterings continued to rise and was 25.5% above the last trough in October 1996. The trend estimate for lamb slaughterings fell by 1.0% from the previous month and follows a similar fall in March.

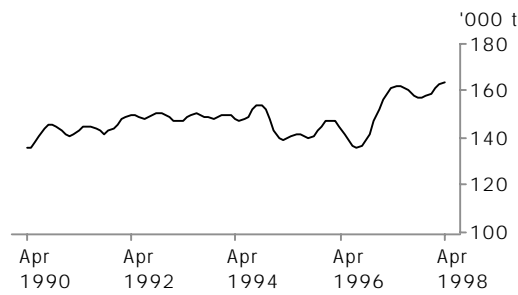
PIGS



The trend estimate for pig slaughterings rose by 0.9% from the previous month and is 6.9% above the last trough in October 1997. Recent increases in pig slaughterings reflect downwards pressure on prices due in part to lower beef prices and imports from Denmark and Canada.

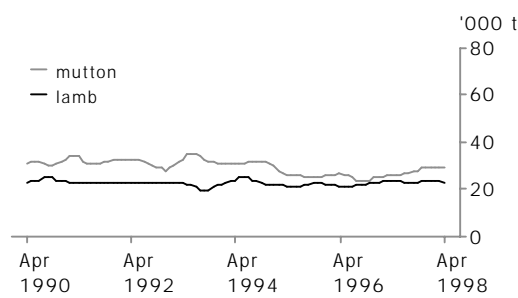
MEAT PRODUCTION: Trend

BEEF



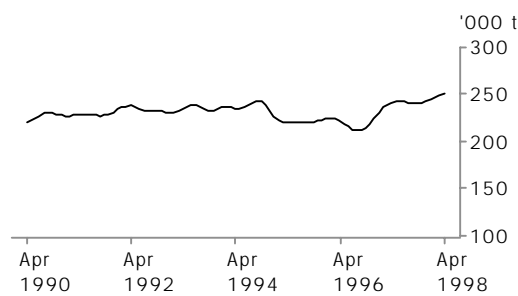
The trend estimate for beef production rose 0.8% to a record high of 163,800 tonnes in April 1998 and is 4.3% above the last trough in November 1997.

MUTTON AND LAMB



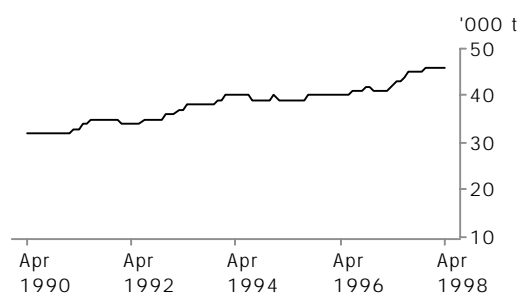
The trend estimate for mutton production fell by 0.6% in April; the trend estimate for lamb production fell by 0.8% in the same period.

TOTAL RED MEAT



The trend estimate for total red meat production rose by 0.4% from the previous month and is 4.0% above the last trough in October 1997.

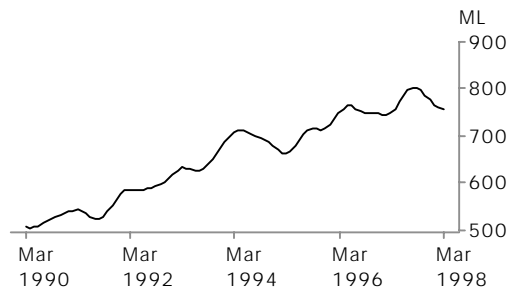
CHICKEN MEAT



The trend estimate for chicken meat production rose marginally in April 1998. This is the fourteenth consecutive monthly rise and the trend estimate is 13.4% above the last trough in February 1997.

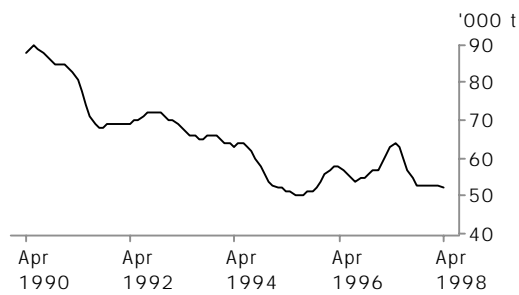
LIVESTOCK PRODUCTS: Trend

WHOLE MILK INTAKE BY FACTORIES



The trend estimate for whole milk intake by factories fell by 0.7% in March 1998 and is 6.0% below the last peak in August 1997.

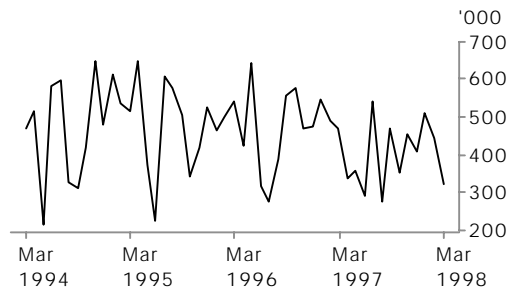
BROKERS AND DEALERS RECEIVALS OF TAXABLE WOOL



The trend estimate for wool receivals by brokers and dealers fell by 1.2% in April 1998 following a 0.7% fall in March 1998.

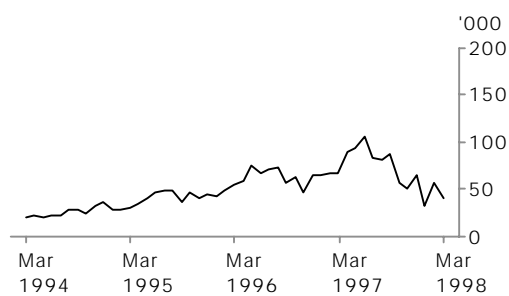
LIVESTOCK EXPORTS: Original

EXPORTS OF LIVE SHEEP



In March 1998 live sheep exports fell by 27.0% to 324,100. The unit value (\$38.24) rose by 2.1% and the gross value (\$12.4 million) fell by 25.4%.

EXPORTS OF LIVE CATTLE



In March 1998 live cattle exports fell by 28.6% to 40,600. The unit value (\$472.53) fell 7.5% and the gross value (\$19.2 million) fell 34.0%. Economic conditions in South East Asia continue to impact heavily on the live cattle trade

LIVESTOCK SLAUGHTERED, Australia(a): All Series

| Month | Bulls, bullocks and steers | Cows and heifers | Total cattle (excluding calves) | Calves | Sheep | Lambs | Pigs | Chickens |
|---------------------|-------------------------------------|------------------------|--|--------|---------|---------|-------|----------|
| | '000 | '000 | '000 | '000 | '000 | '000 | '000 | '000 |
| ORIGINAL | | | | | | | | |
| 1997 | | | | | | | | |
| April | 365.9 | 338.0 | 703.9 | 86.2 | 1 370.7 | 1 383.3 | 405.7 | 29 564.9 |
| May | 358.9 | 370.5 | 729.4 | 95.5 | 1 212.4 | 1 341.2 | 414.2 | 27 571.6 |
| June | 318.4 | 338.4 | 656.8 | 110.7 | 920.1 | 1 134.4 | 405.1 | 28 905.4 |
| July | 354.8 | 359.8 | 714.5 | 148.8 | 986.0 | 1 195.5 | 422.8 | 33 470.0 |
| August | 347.3 | 326.2 | 673.4 | 236.9 | 1 149.0 | 1 120.6 | 384.3 | 27 781.0 |
| September | 368.8 | 300.1 | 668.8 | 237.1 | 1 302.4 | 1 306.9 | 396.3 | 30 370.8 |
| October | 371.7 | 322.7 | 694.4 | 127.9 | 1 595.8 | 1 431.0 | 398.8 | 32 332.5 |
| November | 349.5 | 301.8 | 651.3 | 62.5 | 1 528.8 | 1 273.8 | 376.7 | 28 812.2 |
| December | 294.0 | 302.0 | 596.0 | 41.3 | 1 473.9 | 1 249.2 | 418.9 | 32 503.0 |
| 1998 | | | | | | | | |
| January | 279.8 | 296.8 | 576.6 | 46.6 | 1 618.2 | 1 203.5 | 370.7 | 31 510.4 |
| February | 341.2 | 324.9 | 666.1 | 44.6 | 1 742.7 | 1 167.1 | 392.1 | 28 703.8 |
| March | 354.1 | 344.1 | 698.2 | 60.6 | 1 570.7 | 1 239.5 | 415.5 | 31 681.5 |
| April | 334.6 | 368.5 | 703.1 | 75.9 | 1 357.5 | 1 293.2 | 408.4 | 31 782.2 |
| SEASONALLY ADJUSTED | | | | | | | | |
| 1997 | | | | | | | | |
| April | 355.4 | 314.7 | 670.1 | 121.6 | 1 376.4 | 1 328.0 | 415.2 | 28 562.0 |
| May | 335.8 | 318.3 | 654.1 | 98.7 | 1 224.2 | 1 301.9 | 388.2 | 29 176.4 |
| June | 339.1 | 329.6 | 668.7 | 92.7 | 1 208.5 | 1 292.2 | 402.0 | 29 532.0 |
| July | 341.6 | 351.5 | 693.1 | 106.4 | 1 260.2 | 1 249.0 | 405.2 | 31 361.6 |
| August | 347.3 | 330.1 | 677.3 | 100.6 | 1 431.2 | 1 149.5 | 396.7 | 30 254.8 |
| September | 349.9 | 289.9 | 639.9 | 122.1 | 1 356.3 | 1 200.5 | 388.3 | 30 483.6 |
| October | 335.5 | 303.9 | 639.5 | 110.8 | 1 370.7 | 1 183.9 | 390.7 | 30 258.4 |
| November | 322.2 | 324.5 | 646.7 | 112.9 | 1 352.2 | 1 276.4 | 395.3 | 30 882.6 |
| December | 322.7 | 349.4 | 672.1 | 109.2 | 1 364.3 | 1 330.8 | 382.3 | 29 886.7 |
| 1998 | | | | | | | | |
| January | 331.6 | 347.2 | 678.8 | 107.3 | 1 488.8 | 1 313.0 | 417.4 | 31 154.5 |
| February | 366.2 | 322.0 | 688.2 | 113.8 | 1 562.0 | 1 256.7 | 419.6 | 30 363.3 |
| March | 340.3 | 335.2 | 675.4 | 120.2 | 1 400.2 | 1 185.1 | 409.4 | 31 188.8 |
| April | 347.7 | 380.6 | 728.3 | 107.1 | 1 416.4 | 1 254.4 | 418.5 | 30 940.1 |
| TREND ESTIMATES | | | | | | | | |
| 1997 | | | | | | | | |
| April | 352.6 | 312.8 | 665.4 | 103.7 | 1 252.7 | 1 284.4 | 395.7 | 28 999.2 |
| May | 348.1 | 323.6 | 671.6 | 103.3 | 1 263.3 | 1 274.9 | 397.7 | 29 388.3 |
| June | 344.6 | 327.9 | 672.5 | 103.5 | 1 280.6 | 1 255.6 | 399.1 | 29 826.1 |
| July | 342.6 | 326.4 | 669.0 | 104.9 | 1 302.4 | 1 232.8 | 398.4 | 30 199.2 |
| August | 340.7 | 322.5 | 663.2 | 107.1 | 1 324.5 | 1 216.1 | 395.7 | 30 448.9 |
| September | 338.1 | 319.5 | 657.6 | 109.4 | 1 347.9 | 1 214.5 | 392.9 | 30 546.6 |
| October | 335.0 | 318.9 | 653.9 | 111.3 | 1 374.4 | 1 229.1 | 392.0 | 30 540.0 |
| November | 333.3 | 321.8 | 655.1 | 112.4 | 1 400.2 | 1 253.1 | 394.4 | 30 506.2 |
| December | 333.9 | 328.3 | 662.2 | 112.1 | 1 419.6 | 1 271.2 | 399.0 | 30 535.3 |
| 1998 | | | | | | | | |
| January | 337.1 | 336.5 | 673.6 | 111.9 | 1 437.8 | 1 275.7 | 405.0 | 30 642.2 |
| February | 341.5 | 343.8 | 685.4 | 112.0 | 1 452.7 | 1 268.5 | 410.6 | 30 760.0 |
| March | 345.8 | 350.8 | 696.6 | 112.1 | 1 461.3 | 1 256.1 | 415.4 | 30 865.3 |
| April | 350.0 | 356.2 | 706.1 | 112.8 | 1 462.1 | 1 243.6 | 418.9 | 30 966.2 |

(a) For more information refer to paragraphs 5 to 9 of the Explanatory Notes.

LIVESTOCK PRODUCTS, Australia(a): All Series

RED MEAT.....

| Month | Beef | Veal | Mutton | Lamb | Pig meat | Total red meat | Chicken meat | Whole milk intake by factories | Brokers and dealers receipts of taxable wool |
|---------------------|---------|--------|--------|--------|----------|----------------|--------------|--------------------------------|--|
| | tonnes | tonnes | tonnes | tonnes | tonnes | tonnes | tonnes | ML | tonnes |
| ORIGINAL | | | | | | | | | |
| 1997 | | | | | | | | | |
| April | 169 905 | 3 316 | 27 734 | 25 935 | 28 684 | 255 573 | 42 345 | 537 | 52 668 |
| May | 174 827 | 3 339 | 24 124 | 25 274 | 30 040 | 257 605 | 40 589 | 511 | 40 780 |
| June | 156 204 | 3 457 | 18 431 | 21 364 | 29 167 | 228 624 | 42 228 | 483 | 34 161 |
| July | 169 720 | 4 522 | 19 769 | 22 335 | 29 976 | 246 322 | 48 978 | 528 | 52 352 |
| August | 160 903 | 6 044 | 23 539 | 20 833 | 27 264 | 238 584 | 41 013 | 698 | 65 847 |
| September | 161 053 | 6 130 | 27 046 | 24 358 | 28 129 | 246 716 | 44 901 | 973 | 74 280 |
| October | 167 562 | 4 025 | 33 753 | 26 743 | 28 465 | 260 548 | 48 426 | 1 197 | 90 445 |
| November | 158 580 | 2 679 | 31 958 | 24 088 | 26 519 | 243 824 | 42 578 | 1 124 | 69 040 |
| December | 140 653 | 2 079 | 30 617 | 23 545 | 28 275 | 225 168 | 47 854 | 1 033 | 44 794 |
| 1998 | | | | | | | | | |
| January | 133 572 | 2 478 | 33 311 | 22 888 | 25 491 | 217 740 | 46 974 | 880 | 39 144 |
| February | 161 349 | 2 495 | 35 414 | 22 109 | 27 441 | 248 807 | 42 859 | 716 | 43 499 |
| March | 166 855 | 2 899 | 31 697 | 23 466 | 29 269 | 254 186 | 48 085 | 684 | 53 201 |
| April | 162 613 | 3 485 | 26 469 | 24 441 | 29 162 | 246 169 | 47 255 | n.a. | 39 884 |
| SEASONALLY ADJUSTED | | | | | | | | | |
| 1997 | | | | | | | | | |
| April | 161 663 | 3 816 | 28 206 | 25 035 | 28 792 | 247 512 | 41 696 | 743 | 69 512 |
| May | 158 835 | 3 169 | 24 968 | 24 377 | 27 725 | 239 075 | 42 659 | 776 | 63 170 |
| June | 158 759 | 2 999 | 24 743 | 23 862 | 28 339 | 238 703 | 43 045 | 793 | 65 693 |
| July | 163 652 | 3 355 | 25 220 | 23 339 | 28 726 | 244 293 | 46 073 | 805 | 68 071 |
| August | 165 110 | 3 669 | 29 812 | 21 840 | 27 725 | 248 156 | 43 933 | 796 | 51 292 |
| September | 156 063 | 4 032 | 27 734 | 22 865 | 27 456 | 238 149 | 44 628 | 800 | 45 961 |
| October | 153 528 | 3 672 | 28 581 | 22 352 | 27 972 | 236 104 | 45 647 | 815 | 55 339 |
| November | 154 841 | 3 830 | 27 400 | 24 082 | 27 566 | 237 719 | 45 968 | 791 | 55 246 |
| December | 158 844 | 3 864 | 28 428 | 25 208 | 27 006 | 243 349 | 44 352 | 769 | 57 417 |
| 1998 | | | | | | | | | |
| January | 160 022 | 3 586 | 29 882 | 24 398 | 29 213 | 247 101 | 47 320 | 747 | 53 268 |
| February | 163 862 | 3 861 | 32 063 | 23 511 | 30 009 | 253 306 | 45 134 | 758 | 47 227 |
| March | 159 409 | 4 005 | 28 670 | 22 214 | 28 908 | 243 207 | 46 768 | 772 | 54 058 |
| April | 165 193 | 3 982 | 27 689 | 23 963 | 28 983 | 249 810 | 46 219 | n.a. | 53 791 |
| TREND | | | | | | | | | |
| 1997 | | | | | | | | | |
| April | 160 560 | 3 323 | 25 650 | 23 918 | 27 735 | 241 185 | 41 697 | 759 | 63 086 |
| May | 161 575 | 3 310 | 25 807 | 23 792 | 27 935 | 242 418 | 42 512 | 772 | 63 990 |
| June | 161 603 | 3 351 | 26 149 | 23 502 | 28 103 | 242 709 | 43 411 | 786 | 63 014 |
| July | 160 834 | 3 450 | 26 644 | 23 162 | 28 129 | 242 219 | 44 187 | 797 | 60 427 |
| August | 159 579 | 3 578 | 27 164 | 22 927 | 27 971 | 241 220 | 44 765 | 804 | 57 355 |
| September | 158 258 | 3 697 | 27 705 | 22 957 | 27 759 | 240 377 | 45 107 | 803 | 54 724 |
| October | 157 236 | 3 780 | 28 293 | 23 241 | 27 671 | 240 222 | 45 309 | 797 | 53 290 |
| November | 157 027 | 3 815 | 28 807 | 23 649 | 27 837 | 241 136 | 45 487 | 786 | 52 999 |
| December | 157 803 | 3 808 | 29 119 | 23 917 | 28 167 | 242 815 | 45 679 | 776 | 53 212 |
| 1998 | | | | | | | | | |
| January | 159 374 | 3 814 | 29 348 | 23 957 | 28 571 | 245 064 | 45 905 | 767 | 53 356 |
| February | 161 055 | 3 847 | 29 488 | 23 822 | 28 928 | 247 141 | 46 092 | 761 | 53 030 |
| March | 162 578 | 3 889 | 29 491 | 23 622 | 29 205 | 248 785 | 46 236 | 756 | 52 678 |
| April | 163 803 | 3 949 | 29 309 | 23 443 | 29 386 | 249 890 | 46 325 | n.a. | 52 039 |

(a) For more information refer to paragraphs 5 to 9 and 14 to 16 of the Explanatory Notes

NUMBER OF LIVESTOCK SLAUGHTERED(a), Bulls, Bullocks and Steers: All Series

| | New South Wales | Victoria | Queensland | South Australia | Western Australia | Tasmania | Australia |
|---------------------|--------------------|----------|------------|--------------------|----------------------|----------|-----------|
| Month | '000 | '000 | '000 | '000 | '000 | '000 | '000 |
| ORIGINAL | | | | | | | |
| 1997 | | | | | | | |
| April | 99.4 | 81.8 | 141.5 | 17.4 | 13.7 | 10.3 | 365.9 |
| May | 94.7 | 71.0 | 150.6 | 15.3 | 13.6 | 9.7 | 358.9 |
| June | 78.8 | 62.2 | 140.8 | 13.8 | 12.6 | 7.5 | 318.4 |
| July | 86.1 | 74.4 | 156.7 | 12.1 | 14.3 | 8.6 | 354.8 |
| August | 86.2 | 67.1 | 158.2 | 10.5 | 14.2 | 7.2 | 347.3 |
| September | 86.9 | 72.0 | 171.3 | 13.5 | 17.6 | 5.3 | 368.8 |
| October | 87.7 | 75.3 | 160.8 | 18.0 | 20.6 | 6.7 | 371.7 |
| November | 81.2 | 72.4 | 150.5 | 18.2 | 19.6 | 7.3 | 349.5 |
| December | 79.5 | 79.1 | 92.4 | 15.2 | 18.6 | 9.1 | 294.0 |
| 1998 | | | | | | | |
| January | 70.5 | 88.2 | 81.9 | 14.1 | 15.8 | 9.2 | 279.8 |
| February | 82.3 | 84.6 | 131.0 | 19.1 | 16.0 | 8.1 | 341.2 |
| March | 85.3 | 82.8 | 144.9 | 14.6 | 18.2 | 8.2 | 354.1 |
| April | 76.6 | 79.6 | 136.7 | 15.7 | 14.7 | 10.2 | 334.6 |
| SEASONALLY ADJUSTED | | | | | | | |
| 1997 | | | | | | | |
| April | 92.1 | 82.6 | 143.4 | 21.1 | 15.5 | 9.1 | 355.4 |
| May | 88.4 | 68.3 | 140.5 | 15.4 | 15.4 | 8.4 | 335.8 |
| June | 85.4 | 69.0 | 143.2 | 17.5 | 14.0 | 7.3 | 339.1 |
| July | 85.1 | 71.1 | 140.3 | 17.7 | 15.2 | 9.1 | 341.6 |
| August | 87.7 | 81.6 | 135.6 | 15.4 | 16.0 | 10.7 | 347.3 |
| September | 83.6 | 85.0 | 143.1 | 12.8 | 16.4 | 7.9 | 349.9 |
| October | 82.3 | 73.4 | 137.7 | 14.2 | 17.1 | 8.2 | 335.5 |
| November | 78.6 | 69.6 | 133.7 | 13.6 | 17.2 | 7.7 | 322.2 |
| December | 86.8 | 73.6 | 109.0 | 14.7 | 14.6 | 7.6 | 322.7 |
| 1998 | | | | | | | |
| January | 76.7 | 82.0 | 146.2 | 12.7 | 16.5 | 7.4 | 331.6 |
| February | 86.3 | 79.8 | 160.5 | 18.0 | 16.6 | 7.9 | 366.2 |
| March | 79.8 | 77.1 | 153.9 | 13.0 | 19.0 | 6.9 | 340.3 |
| April | 77.0 | 79.8 | 139.0 | 18.9 | 18.1 | 9.3 | 347.7 |
| TREND ESTIMATES | | | | | | | |
| 1997 | | | | | | | |
| April | 91.4 | 72.9 | 147.5 | 16.5 | 15.7 | 8.9 | 352.6 |
| May | 89.7 | 72.5 | 145.9 | 17.0 | 15.2 | 8.7 | 348.1 |
| June | 87.8 | 73.2 | 143.2 | 17.0 | 15.0 | 8.7 | 344.6 |
| July | 86.1 | 74.7 | 140.5 | 16.4 | 15.3 | 8.8 | 342.6 |
| August | 84.6 | 75.9 | 138.1 | 15.5 | 15.8 | 8.8 | 340.7 |
| September | 83.5 | 76.4 | 135.6 | 14.5 | 16.1 | 8.6 | 338.1 |
| October | 82.9 | 76.4 | 133.5 | 13.9 | 16.3 | 8.3 | 335.0 |
| November | 82.4 | 76.3 | 133.6 | 13.8 | 16.4 | 7.9 | 333.3 |
| December | 81.9 | 76.2 | 136.0 | 14.0 | 16.5 | 7.6 | 333.9 |
| 1998 | | | | | | | |
| January | 81.5 | 76.8 | 139.9 | 14.6 | 16.7 | 7.6 | 337.1 |
| February | 81.0 | 77.9 | 144.1 | 15.3 | 17.1 | 7.7 | 341.5 |
| March | 80.4 | 78.9 | 147.6 | 15.9 | 17.5 | 7.9 | 345.8 |
| April | 79.7 | 80.2 | 150.5 | 16.5 | 17.9 | 8.1 | 350.0 |

(a) For more information refer to paragraph 6 of the Explanatory Notes.

NUMBER OF LIVESTOCK SLAUGHTERED(a), Cows and Heifers: All Series

| | New South Wales | Victoria | Queensland | South Australia | Western Australia | Tasmania | Australia |
|---------------------|--------------------|----------|------------|--------------------|----------------------|----------|-----------|
| Month | '000 | '000 | '000 | '000 | '000 | '000 | '000 |
| ORIGINAL | | | | | | | |
| 1997 | | | | | | | |
| April | 94.0 | 83.6 | 110.7 | 19.8 | 15.9 | 10.6 | 338.0 |
| May | 103.9 | 84.0 | 125.1 | 18.8 | 17.0 | 12.3 | 370.5 |
| June | 97.8 | 77.0 | 112.3 | 18.6 | 15.0 | 10.3 | 338.4 |
| July | 102.4 | 73.9 | 131.3 | 19.4 | 18.0 | 9.5 | 359.8 |
| August | 93.1 | 65.1 | 119.4 | 19.1 | 17.8 | 6.4 | 326.2 |
| September | 87.6 | 57.4 | 108.7 | 15.1 | 19.2 | 4.9 | 300.1 |
| October | 90.1 | 72.0 | 107.0 | 16.3 | 22.0 | 9.4 | 322.7 |
| November | 92.4 | 68.2 | 94.9 | 16.8 | 19.1 | 9.7 | 301.8 |
| December | 93.4 | 84.9 | 76.3 | 14.0 | 23.0 | 10.1 | 302.0 |
| 1998 | | | | | | | |
| January | 91.3 | 77.1 | 73.5 | 12.8 | 28.4 | 13.3 | 296.8 |
| February | 92.7 | 74.7 | 104.9 | 16.1 | 25.6 | 10.4 | 324.9 |
| March | 97.5 | 76.1 | 121.9 | 20.1 | 18.5 | 9.7 | 344.1 |
| April | 104.8 | 78.9 | 129.5 | 20.9 | 18.7 | 11.2 | 368.5 |
| SEASONALLY ADJUSTED | | | | | | | |
| 1997 | | | | | | | |
| April | 87.4 | 81.9 | 102.0 | 18.0 | 19.6 | 8.7 | 314.7 |
| May | 90.9 | 79.9 | 104.6 | 17.4 | 19.2 | 8.9 | 318.3 |
| June | 95.8 | 84.2 | 96.1 | 19.8 | 19.7 | 9.1 | 329.6 |
| July | 99.8 | 83.8 | 105.9 | 23.0 | 21.4 | 10.7 | 351.5 |
| August | 100.5 | 79.5 | 102.3 | 20.4 | 18.9 | 10.5 | 330.1 |
| September | 87.4 | 56.8 | 102.6 | 15.0 | 17.3 | 7.5 | 289.9 |
| October | 81.2 | 61.3 | 111.4 | 16.2 | 19.8 | 10.5 | 303.9 |
| November | 95.1 | 67.0 | 112.4 | 15.0 | 19.6 | 10.3 | 324.5 |
| December | 100.6 | 82.4 | 112.9 | 15.3 | 20.4 | 9.3 | 349.4 |
| 1998 | | | | | | | |
| January | 101.1 | 72.4 | 126.5 | 13.2 | 25.3 | 13.4 | 347.2 |
| February | 94.4 | 76.0 | 112.2 | 14.9 | 20.8 | 10.2 | 322.0 |
| March | 99.4 | 73.6 | 115.7 | 18.8 | 17.3 | 8.2 | 335.2 |
| April | 107.4 | 77.9 | 120.1 | 21.8 | 23.9 | 9.2 | 380.6 |
| TREND ESTIMATES | | | | | | | |
| 1997 | | | | | | | |
| April | 91.0 | 77.0 | 96.9 | 17.6 | 19.0 | 8.5 | 312.8 |
| May | 93.8 | 80.6 | 99.9 | 18.8 | 19.4 | 8.9 | 323.6 |
| June | 95.0 | 80.8 | 101.6 | 19.6 | 19.6 | 9.3 | 327.9 |
| July | 94.7 | 78.0 | 102.6 | 19.7 | 19.5 | 9.6 | 326.4 |
| August | 93.7 | 73.7 | 104.2 | 19.1 | 19.3 | 9.7 | 322.5 |
| September | 92.7 | 69.9 | 106.4 | 17.8 | 19.3 | 9.8 | 319.5 |
| October | 92.3 | 68.0 | 109.3 | 16.2 | 19.7 | 10.0 | 318.9 |
| November | 93.0 | 68.7 | 112.5 | 15.0 | 20.2 | 10.3 | 321.8 |
| December | 94.9 | 71.1 | 114.9 | 14.7 | 20.8 | 10.4 | 328.3 |
| 1998 | | | | | | | |
| January | 97.5 | 73.8 | 116.6 | 15.3 | 21.2 | 10.4 | 336.5 |
| February | 99.9 | 75.7 | 117.7 | 16.4 | 21.5 | 10.2 | 343.8 |
| March | 102.0 | 77.1 | 118.4 | 17.7 | 21.6 | 9.9 | 350.8 |
| April | 103.7 | 77.5 | 118.5 | 18.9 | 21.6 | 9.4 | 356.2 |

(a) For more information refer to paragraph 6 of the Explanatory Notes.

NUMBER OF LIVESTOCK SLAUGHTERED(a), Total Cattle (excluding Calves): All Series

| | New South Wales | Victoria | Queensland | South Australia | Western Australia | Tasmania | Australia |
|---------------------|--------------------|----------|------------|--------------------|----------------------|----------|--------------|
| Month | '000 | '000 | '000 | '000 | '000 | '000 | '000 |
| ORIGINAL | | | | | | | |
| 1997 | | | | | | | |
| April | 193.3 | 165.4 | 252.2 | 37.2 | 29.6 | 20.9 | 703.9 |
| May | 198.5 | 155.0 | 275.7 | 34.1 | 30.7 | 22.0 | 729.4 |
| June | 176.6 | 139.3 | 253.1 | 32.4 | 27.6 | 17.8 | 656.8 |
| July | 188.4 | 148.3 | 288.0 | 31.5 | 32.2 | 18.1 | 714.5 |
| August | 179.2 | 132.2 | 277.7 | 29.5 | 31.9 | 13.6 | 673.4 |
| September | 174.5 | 129.4 | 279.9 | 28.6 | 36.9 | 10.1 | 668.8 |
| October | 177.9 | 147.3 | 267.8 | 34.3 | 42.6 | 16.1 | 694.4 |
| November | 173.6 | 140.6 | 245.4 | 35.0 | 38.7 | 17.0 | 651.3 |
| December | 173.0 | 163.9 | 168.8 | 29.2 | 41.6 | 19.1 | 596.0 |
| 1998 | | | | | | | |
| January | 161.8 | 165.3 | 155.4 | 26.9 | 44.2 | 22.5 | 576.6 |
| February | 175.0 | 159.4 | 235.9 | 35.2 | 41.6 | 18.5 | 666.1 |
| March | 182.8 | 158.9 | 266.8 | 34.7 | 36.7 | 17.9 | 698.2 |
| April | 181.4 | 158.5 | 266.2 | 36.6 | 33.3 | 21.4 | 703.1 |
| SEASONALLY ADJUSTED | | | | | | | |
| 1997 | | | | | | | |
| April | 179.4 | 164.5 | 245.3 | 39.0 | 35.1 | 17.8 | 670.1 |
| May | 179.4 | 148.2 | 245.1 | 32.8 | 34.6 | 17.3 | 654.1 |
| June | 181.2 | 153.2 | 239.3 | 37.3 | 33.7 | 16.5 | 668.7 |
| July | 184.9 | 154.9 | 246.2 | 40.7 | 36.6 | 19.8 | 693.1 |
| August | 188.2 | 161.1 | 237.9 | 35.7 | 35.0 | 21.2 | 677.3 |
| September | 171.0 | 141.8 | 245.7 | 27.8 | 33.7 | 15.4 | 639.9 |
| October | 163.5 | 134.7 | 249.1 | 30.4 | 36.9 | 18.7 | 639.5 |
| November | 173.8 | 136.6 | 246.1 | 28.5 | 36.8 | 18.0 | 646.7 |
| December | 187.4 | 156.0 | 221.9 | 30.0 | 35.0 | 16.8 | 672.1 |
| 1998 | | | | | | | |
| January | 177.7 | 154.4 | 272.7 | 25.9 | 41.8 | 20.8 | 678.8 |
| February | 180.7 | 155.8 | 272.7 | 32.8 | 37.5 | 18.1 | 688.2 |
| March | 179.2 | 150.7 | 269.6 | 31.8 | 36.2 | 15.1 | 675.4 |
| April | 184.3 | 157.6 | 259.2 | 40.7 | 41.9 | 18.6 | 728.3 |
| TREND ESTIMATES | | | | | | | |
| 1997 | | | | | | | |
| April | 182.4 | 149.9 | 244.4 | 34.2 | 34.7 | 17.4 | 665.4 |
| May | 183.6 | 153.1 | 245.7 | 35.8 | 34.5 | 17.6 | 671.6 |
| June | 182.9 | 154.1 | 244.8 | 36.5 | 34.6 | 18.0 | 672.5 |
| July | 180.8 | 152.7 | 243.2 | 36.1 | 34.8 | 18.3 | 669.0 |
| August | 178.2 | 149.6 | 242.3 | 34.5 | 35.0 | 18.4 | 663.2 |
| September | 176.2 | 146.3 | 242.0 | 32.3 | 35.4 | 18.4 | 657.6 |
| October | 175.2 | 144.4 | 242.8 | 30.1 | 35.9 | 18.3 | 653.9 |
| November | 175.3 | 145.0 | 246.1 | 28.8 | 36.6 | 18.2 | 655.1 |
| December | 176.8 | 147.3 | 250.9 | 28.8 | 37.2 | 18.1 | 662.2 |
| 1998 | | | | | | | |
| January | 179.0 | 150.6 | 256.5 | 30.0 | 37.9 | 18.0 | 673.6 |
| February | 180.9 | 153.6 | 261.8 | 31.6 | 38.5 | 17.9 | 685.4 |
| March | 182.4 | 156.0 | 266.0 | 33.6 | 39.1 | 17.8 | 696.6 |
| April | 183.4 | 157.7 | 269.0 | 35.4 | 39.5 | 17.5 | 706.1 |

(a) For more information refer to paragraph 6 of the Explanatory Notes.

NUMBER OF LIVESTOCK SLAUGHTERED(a), Calves: All Series

| | New South Wales | Victoria | Queensland | South Australia | Western Australia | Tasmania | Australia |
|---------------------|--------------------|----------|------------|--------------------|----------------------|----------|--------------|
| Month | '000 | '000 | '000 | '000 | '000 | '000 | '000 |
| ORIGINAL | | | | | | | |
| 1997 | | | | | | | |
| April | 27.3 | 42.4 | 12.1 | 2.3 | 0.4 | 1.6 | 86.2 |
| May | 23.9 | 55.8 | 11.3 | 2.0 | 0.6 | 1.7 | 95.5 |
| June | 22.3 | 75.1 | 9.9 | 1.9 | 0.4 | 0.9 | 110.7 |
| July | 28.5 | 105.2 | 10.9 | 1.7 | 0.5 | 1.9 | 148.8 |
| August | 24.4 | 185.5 | 9.8 | 2.0 | 0.4 | 14.7 | 236.9 |
| September | 25.7 | 178.5 | 9.8 | 2.1 | 0.4 | 20.4 | 237.1 |
| October | 26.3 | 80.0 | 10.3 | 1.4 | 0.4 | 9.4 | 127.9 |
| November | 22.9 | 28.3 | 8.5 | 1.1 | 0.4 | 1.2 | 62.5 |
| December | 20.3 | 11.8 | 7.5 | 1.1 | 0.4 | 0.2 | 41.3 |
| 1998 | | | | | | | |
| January | 23.7 | 11.1 | 10.2 | 1.0 | 0.4 | 0.2 | 46.6 |
| February | 24.8 | 8.3 | 9.6 | 0.9 | 0.6 | 0.2 | 44.6 |
| March | 25.4 | 21.3 | 10.5 | 2.1 | 0.6 | 0.6 | 60.6 |
| April | 29.7 | 31.3 | 10.3 | 2.1 | 0.4 | 2.0 | 75.9 |
| SEASONALLY ADJUSTED | | | | | | | |
| 1997 | | | | | | | |
| April | 23.3 | 74.2 | 10.7 | 1.7 | 0.5 | 6.9 | 121.6 |
| May | 22.6 | 63.0 | 9.9 | 1.7 | 0.7 | 5.8 | 98.7 |
| June | 22.1 | 54.5 | 9.7 | 1.9 | 0.4 | 5.1 | 92.7 |
| July | 25.0 | 66.4 | 10.3 | 1.7 | 0.4 | 4.2 | 106.4 |
| August | 23.6 | 60.2 | 10.3 | 1.5 | 0.3 | 4.0 | 100.6 |
| September | 26.0 | 75.6 | 10.1 | 1.6 | 0.4 | 3.9 | 122.1 |
| October | 24.6 | 67.8 | 9.8 | 1.4 | 0.4 | 5.9 | 110.8 |
| November | 24.9 | 84.5 | 9.9 | 1.3 | 0.4 | 6.4 | 112.9 |
| December | 25.3 | 73.7 | 8.7 | 1.8 | 0.4 | 3.9 | 109.2 |
| 1998 | | | | | | | |
| January | 25.3 | 88.7 | 10.0 | 1.5 | 0.4 | 6.0 | 107.3 |
| February | 26.3 | 85.5 | 10.2 | 1.5 | 0.8 | 7.3 | 113.8 |
| March | 25.2 | 100.1 | 10.4 | 1.8 | 0.7 | 7.6 | 120.2 |
| April | 28.3 | 54.2 | 9.0 | 1.5 | 0.6 | 8.8 | 107.1 |
| TREND ESTIMATES | | | | | | | |
| 1997 | | | | | | | |
| April | 23.4 | 67.3 | 10.0 | 1.6 | 0.5 | 5.6 | 103.7 |
| May | 23.3 | 65.6 | 10.0 | 1.7 | 0.5 | 5.5 | 103.3 |
| June | 23.4 | 63.9 | 10.1 | 1.7 | 0.5 | 5.2 | 103.5 |
| July | 23.8 | 63.5 | 10.2 | 1.7 | 0.4 | 4.8 | 104.9 |
| August | 24.3 | 65.1 | 10.1 | 1.6 | 0.4 | 4.6 | 107.1 |
| September | 24.7 | 68.4 | 9.9 | 1.6 | 0.4 | 4.6 | 109.4 |
| October | 25.0 | 73.4 | 9.8 | 1.5 | 0.4 | 4.8 | 111.3 |
| November | 25.2 | 78.5 | 9.8 | 1.5 | 0.4 | 5.2 | 112.4 |
| December | 25.3 | 81.9 | 9.7 | 1.5 | 0.5 | 5.7 | 112.1 |
| 1998 | | | | | | | |
| January | 25.6 | 83.6 | 9.8 | 1.6 | 0.5 | 6.3 | 111.9 |
| February | 26.0 | 83.5 | 9.8 | 1.6 | 0.6 | 6.9 | 112.0 |
| March | 26.4 | 81.7 | 9.8 | 1.7 | 0.6 | 7.5 | 112.1 |
| April | 26.9 | 79.4 | 9.8 | 1.7 | 0.7 | 8.0 | 112.8 |

(a) For more information refer to paragraph 6 of the Explanatory notes.

NUMBER OF LIVESTOCK SLAUGHTERED(a), Sheep: All Series

| | <i>New South Wales</i> | <i>Victoria</i> | <i>Queensland</i> | <i>South Australia</i> | <i>Western Australia</i> | <i>Tasmania</i> | <i>Australia</i> |
|---------------------|----------------------------|-----------------|-------------------|----------------------------|------------------------------|-----------------|------------------|
| <i>Month</i> | '000 | '000 | '000 | '000 | '000 | '000 | '000 |
| ORIGINAL | | | | | | | |
| 1997 | | | | | | | |
| April | 514.6 | 262.4 | 81.4 | 242.2 | 214.2 | 46.5 | 1 370.7 |
| May | 463.6 | 226.7 | 75.5 | 165.5 | 237.6 | 35.9 | 1 212.4 |
| June | 386.0 | 175.8 | 71.4 | 136.9 | 118.3 | 31.0 | 920.1 |
| July | 455.5 | 192.3 | 100.4 | 70.1 | 137.2 | 30.6 | 986.0 |
| August | 425.3 | 195.8 | 89.9 | 203.2 | 212.3 | 22.5 | 1 149.0 |
| September | 429.5 | 234.5 | 103.0 | 235.1 | 282.3 | 18.0 | 1 302.4 |
| October | 555.3 | 322.7 | 119.4 | 238.4 | 327.1 | 32.9 | 1 595.8 |
| November | 534.7 | 310.1 | 101.6 | 265.0 | 277.9 | 39.5 | 1 528.8 |
| December | 506.6 | 340.5 | 107.4 | 246.5 | 215.7 | 57.1 | 1 473.9 |
| 1998 | | | | | | | |
| January | 536.5 | 339.3 | 131.3 | 291.3 | 263.3 | 56.5 | 1 618.2 |
| February | 596.3 | 419.6 | 117.5 | 300.6 | 252.4 | 56.2 | 1 742.7 |
| March | 536.5 | 361.8 | 117.3 | 283.7 | 222.8 | 48.6 | 1 570.7 |
| April | 454.7 | 278.4 | 109.9 | 243.9 | 232.2 | 38.5 | 1 357.5 |
| SEASONALLY ADJUSTED | | | | | | | |
| 1997 | | | | | | | |
| April | 498.0 | 260.0 | 83.6 | 234.2 | 216.6 | 40.8 | 1 376.4 |
| May | 448.7 | 267.6 | 70.3 | 185.3 | 219.6 | 31.1 | 1 224.2 |
| June | 458.9 | 264.4 | 82.3 | 204.7 | 187.1 | 32.2 | 1 280.5 |
| July | 484.8 | 280.4 | 91.2 | 132.3 | 189.1 | 38.4 | 1 260.2 |
| August | 496.3 | 302.7 | 93.3 | 307.7 | 241.0 | 49.6 | 1 431.2 |
| September | 433.8 | 268.4 | 104.0 | 199.9 | 270.4 | 32.2 | 1 356.3 |
| October | 503.0 | 269.6 | 118.1 | 205.5 | 273.2 | 44.9 | 1 370.7 |
| November | 501.7 | 263.9 | 103.7 | 184.5 | 230.4 | 37.6 | 1 352.2 |
| December | 526.8 | 274.3 | 128.5 | 256.6 | 205.8 | 46.6 | 1 364.3 |
| 1998 | | | | | | | |
| January | 523.3 | 273.3 | 121.2 | 259.2 | 262.6 | 43.1 | 1 488.8 |
| February | 563.1 | 328.7 | 120.5 | 260.1 | 244.0 | 44.7 | 1 562.0 |
| March | 499.4 | 317.9 | 102.3 | 241.6 | 194.1 | 36.7 | 1 400.2 |
| April | 446.7 | 285.7 | 112.0 | 239.3 | 236.1 | 32.4 | 1 416.4 |
| TREND ESTIMATES | | | | | | | |
| 1997 | | | | | | | |
| April | 463.0 | 252.9 | 75.4 | 208.9 | 202.9 | 35.3 | 1 252.7 |
| May | 466.8 | 262.4 | 76.8 | 206.2 | 204.6 | 35.7 | 1 263.3 |
| June | 468.7 | 271.5 | 81.5 | 204.7 | 211.0 | 36.6 | 1 280.6 |
| July | 470.6 | 278.1 | 88.3 | 204.6 | 221.1 | 37.9 | 1 302.4 |
| August | 473.7 | 279.1 | 96.1 | 207.2 | 232.0 | 39.2 | 1 324.5 |
| September | 480.6 | 275.8 | 104.0 | 212.3 | 242.1 | 40.6 | 1 347.9 |
| October | 493.3 | 273.2 | 110.9 | 219.5 | 248.1 | 41.9 | 1 374.4 |
| November | 507.6 | 274.7 | 115.7 | 227.2 | 247.6 | 42.7 | 1 400.2 |
| December | 517.6 | 280.3 | 117.7 | 234.3 | 241.5 | 42.6 | 1 419.6 |
| 1998 | | | | | | | |
| January | 521.5 | 288.7 | 117.7 | 241.1 | 234.1 | 42.0 | 1 437.8 |
| February | 518.1 | 297.3 | 116.4 | 247.8 | 228.9 | 40.8 | 1 452.7 |
| March | 509.9 | 304.3 | 114.4 | 253.0 | 225.1 | 39.3 | 1 461.3 |
| April | 495.5 | 308.7 | 111.9 | 254.1 | 222.9 | 36.9 | 1 462.1 |

(a) For more information refer to paragraph 6 of the Explanatory notes.

NUMBER OF LIVESTOCK SLAUGHTERED(a), Lambs: All Series

| | <i>New South Wales</i> | <i>Victoria</i> | <i>Queensland</i> | <i>South Australia</i> | <i>Western Australia</i> | <i>Tasmania</i> | <i>Australia</i> |
|---------------------|----------------------------|-----------------|-------------------|----------------------------|------------------------------|-----------------|------------------|
| <i>Month</i> | '000 | '000 | '000 | '000 | '000 | '000 | '000 |
| ORIGINAL | | | | | | | |
| 1997 | | | | | | | |
| April | 323.9 | 559.6 | 71.1 | 171.7 | 197.5 | 34.4 | 1 383.3 |
| May | 287.8 | 519.1 | 69.2 | 170.9 | 227.5 | 41.8 | 1 341.2 |
| June | 263.0 | 475.1 | 59.0 | 163.5 | 140.0 | 29.9 | 1 134.4 |
| July | 311.1 | 541.0 | 73.7 | 79.9 | 153.9 | 35.9 | 1 195.5 |
| August | 299.6 | 452.2 | 71.3 | 121.8 | 153.6 | 22.0 | 1 120.6 |
| September | 313.4 | 537.6 | 72.4 | 140.0 | 220.5 | 23.1 | 1 306.9 |
| October | 337.8 | 582.7 | 67.8 | 191.1 | 219.3 | 32.3 | 1 431.0 |
| November | 294.0 | 565.1 | 52.3 | 156.2 | 175.1 | 31.1 | 1 273.8 |
| December | 308.0 | 583.1 | 53.3 | 140.5 | 132.9 | 31.3 | 1 249.2 |
| 1998 | | | | | | | |
| January | 289.2 | 539.2 | 66.1 | 147.7 | 117.5 | 43.9 | 1 203.5 |
| February | 300.6 | 473.3 | 58.8 | 167.6 | 133.9 | 33.0 | 1 167.1 |
| March | 317.9 | 500.4 | 65.2 | 189.3 | 125.9 | 40.9 | 1 239.5 |
| April | 330.2 | 539.8 | 68.3 | 183.4 | 132.6 | 38.9 | 1 293.2 |
| SEASONALLY ADJUSTED | | | | | | | |
| 1997 | | | | | | | |
| April | 277.3 | 528.8 | 64.9 | 172.0 | 204.4 | 33.0 | 1 328.0 |
| May | 283.6 | 517.5 | 66.2 | 164.0 | 214.0 | 35.2 | 1 301.9 |
| June | 286.6 | 535.3 | 67.0 | 190.5 | 186.1 | 27.2 | 1 292.2 |
| July | 295.4 | 550.7 | 67.1 | 101.6 | 199.1 | 37.9 | 1 249.0 |
| August | 293.5 | 489.5 | 65.5 | 145.9 | 154.2 | 30.1 | 1 149.5 |
| September | 287.9 | 511.8 | 77.5 | 122.6 | 140.7 | 28.3 | 1 200.5 |
| October | 298.3 | 513.8 | 58.4 | 152.5 | 143.2 | 36.9 | 1 183.9 |
| November | 346.4 | 525.4 | 59.6 | 148.0 | 154.2 | 35.1 | 1 276.4 |
| December | 342.8 | 547.9 | 64.2 | 158.8 | 192.3 | 31.0 | 1 330.8 |
| 1998 | | | | | | | |
| January | 311.8 | 550.8 | 64.7 | 155.0 | 169.7 | 37.3 | 1 313.0 |
| February | 317.1 | 518.0 | 59.3 | 165.7 | 163.1 | 31.5 | 1 256.7 |
| March | 298.8 | 505.4 | 66.2 | 163.4 | 125.1 | 35.4 | 1 185.1 |
| April | 306.4 | 547.0 | 63.7 | 180.3 | 135.7 | 36.1 | 1 254.4 |
| TREND ESTIMATES | | | | | | | |
| 1997 | | | | | | | |
| April | 286.2 | 524.9 | 65.4 | 158.0 | 205.8 | 32.9 | 1 284.4 |
| May | 284.9 | 526.0 | 66.0 | 156.1 | 201.5 | 32.6 | 1 274.9 |
| June | 284.8 | 524.9 | 67.0 | 151.2 | 191.0 | 32.3 | 1 255.6 |
| July | 287.7 | 521.7 | 67.6 | 145.1 | 177.5 | 32.1 | 1 232.8 |
| August | 294.2 | 518.6 | 67.5 | 140.1 | 165.2 | 32.3 | 1 216.1 |
| September | 303.7 | 518.5 | 66.4 | 138.1 | 158.1 | 32.6 | 1 214.5 |
| October | 313.6 | 521.3 | 65.0 | 140.4 | 156.8 | 33.1 | 1 229.1 |
| November | 320.7 | 525.8 | 63.6 | 146.9 | 159.7 | 33.6 | 1 253.1 |
| December | 323.5 | 530.1 | 62.7 | 154.1 | 162.5 | 33.9 | 1 271.2 |
| 1998 | | | | | | | |
| January | 321.9 | 532.5 | 62.5 | 159.5 | 161.7 | 34.3 | 1 275.7 |
| February | 317.3 | 532.2 | 62.8 | 164.2 | 156.7 | 34.6 | 1 268.5 |
| March | 311.9 | 531.0 | 63.1 | 169.0 | 149.6 | 34.8 | 1 256.1 |
| April | 305.8 | 530.0 | 64.4 | 171.9 | 141.7 | 34.8 | 1 243.6 |

(a) For more information refer to paragraph 6 of the Explanatory notes.

NUMBER OF LIVESTOCK SLAUGHTERED(a), Pigs: All Series

| | New South Wales | Victoria | Queensland | South Australia | Western Australia | Tasmania | Australia |
|---------------------|--------------------|----------|------------|--------------------|----------------------|----------|-----------|
| Month | '000 | '000 | '000 | '000 | '000 | '000 | '000 |
| ORIGINAL | | | | | | | |
| 1997 | | | | | | | |
| April | 108.2 | 111.2 | 93.6 | 35.6 | 44.8 | 6.5 | 405.7 |
| May | 108.4 | 113.5 | 90.5 | 39.5 | 49.2 | 7.5 | 414.2 |
| June | 118.7 | 105.4 | 85.2 | 35.7 | 52.7 | 5.9 | 405.1 |
| July | 119.7 | 118.8 | 94.9 | 34.5 | 46.7 | 7.7 | 422.8 |
| August | 105.4 | 104.2 | 86.6 | 37.1 | 44.8 | 5.7 | 384.3 |
| September | 119.0 | 108.1 | 85.2 | 32.7 | 45.4 | 5.4 | 396.3 |
| October | 116.4 | 107.9 | 92.1 | 32.2 | 42.9 | 6.8 | 398.8 |
| November | 107.5 | 98.9 | 88.9 | 33.5 | 41.7 | 5.7 | 376.7 |
| December | 134.1 | 115.7 | 89.2 | 27.5 | 44.2 | 7.5 | 418.9 |
| 1998 | | | | | | | |
| January | 100.3 | 104.7 | 87.1 | 29.9 | 41.4 | 6.9 | 370.7 |
| February | 104.8 | 102.4 | 93.3 | 37.8 | 47.7 | 5.6 | 392.1 |
| March | 119.1 | 120.4 | 91.5 | 31.1 | 47.3 | 5.4 | 415.5 |
| April | 116.1 | 125.7 | 88.7 | 26.2 | 44.9 | 6.2 | 408.4 |
| SEASONALLY ADJUSTED | | | | | | | |
| 1997 | | | | | | | |
| April | 109.6 | 108.6 | 98.0 | 38.8 | 43.6 | 6.6 | 415.2 |
| May | 106.9 | 105.5 | 86.1 | 33.5 | 47.0 | 6.7 | 388.2 |
| June | 113.0 | 107.4 | 80.7 | 38.3 | 48.0 | 5.9 | 402.0 |
| July | 116.1 | 109.7 | 92.8 | 33.9 | 44.1 | 7.0 | 405.2 |
| August | 114.5 | 110.4 | 89.2 | 33.1 | 45.5 | 6.1 | 396.7 |
| September | 113.0 | 108.0 | 83.6 | 33.1 | 45.7 | 5.8 | 388.3 |
| October | 115.5 | 98.4 | 92.6 | 33.4 | 42.2 | 7.0 | 390.7 |
| November | 115.6 | 109.8 | 93.2 | 29.5 | 44.1 | 6.0 | 395.3 |
| December | 109.8 | 105.4 | 85.7 | 30.6 | 43.1 | 6.4 | 382.3 |
| 1998 | | | | | | | |
| January | 115.6 | 118.5 | 95.7 | 32.5 | 49.9 | 7.4 | 417.4 |
| February | 116.7 | 113.0 | 97.2 | 37.6 | 51.7 | 6.3 | 419.6 |
| March | 116.9 | 119.7 | 88.0 | 34.2 | 45.5 | 5.5 | 409.4 |
| April | 117.9 | 121.3 | 91.6 | 28.5 | 43.8 | 6.1 | 418.5 |
| TREND ESTIMATES | | | | | | | |
| 1997 | | | | | | | |
| April | 108.4 | 104.3 | 87.5 | 36.3 | 47.3 | 6.6 | 395.7 |
| May | 109.8 | 106.1 | 87.6 | 36.2 | 46.6 | 6.5 | 397.7 |
| June | 111.8 | 107.5 | 87.7 | 35.7 | 46.0 | 6.4 | 399.1 |
| July | 113.5 | 107.9 | 87.8 | 34.8 | 45.4 | 6.3 | 398.4 |
| August | 114.3 | 107.5 | 88.1 | 33.7 | 44.7 | 6.3 | 395.7 |
| September | 114.5 | 106.7 | 88.7 | 32.6 | 44.3 | 6.3 | 392.9 |
| October | 114.3 | 106.3 | 89.7 | 32.0 | 44.3 | 6.4 | 392.0 |
| November | 114.1 | 107.3 | 90.9 | 32.0 | 45.0 | 6.5 | 394.4 |
| December | 114.3 | 109.5 | 91.7 | 32.3 | 45.9 | 6.5 | 399.0 |
| 1998 | | | | | | | |
| January | 114.9 | 112.6 | 92.3 | 32.8 | 46.8 | 6.5 | 405.0 |
| February | 115.7 | 115.6 | 92.5 | 33.0 | 47.2 | 6.3 | 410.6 |
| March | 116.6 | 118.4 | 92.5 | 33.0 | 47.3 | 6.2 | 415.4 |
| April | 117.3 | 120.9 | 92.0 | 32.7 | 47.2 | 6.0 | 418.9 |

(a) For more information refer to paragraph 6 of the Explanatory notes.

NUMBER OF CHICKENS SLAUGHTERED(a): All Series

| Month | New South Wales | Victoria | Queensland | South Australia | Western Australia | Australia |
|---------------------|--------------------|----------|------------|-----------------|-------------------|-----------------|
| | '000 | '000 | '000 | '000 | '000 | '000 |
| ORIGINAL | | | | | | |
| 1997 | | | | | | |
| April | 11 475.7 | 7 244.5 | 5 373.5 | 2 452.2 | 3 019.1 | 29 564.9 |
| May | 10 608.2 | 6 867.5 | 4 956.8 | 2 305.0 | 2 834.1 | 27 571.6 |
| June | 11 476.0 | 6 692.3 | 5 468.2 | 2 353.1 | 2 915.9 | 28 905.4 |
| July | 12 721.0 | 8 263.5 | 6 286.6 | 2 882.4 | 3 316.4 | 33 470.0 |
| August | 10 361.9 | 7 152.4 | 5 111.3 | n.p. | n.p. | 27 781.0 |
| September | 11 842.7 | 7 546.2 | 5 489.5 | n.p. | n.p. | 30 370.8 |
| October | 12 015.3 | 8 442.6 | 5 847.4 | n.p. | n.p. | 32 332.5 |
| November | 10 772.6 | 7 187.8 | 5 201.6 | n.p. | n.p. | 28 812.2 |
| December | 12 191.4 | 8 240.7 | 5 901.5 | n.p. | n.p. | 32 503.0 |
| 1998 | | | | | | |
| January | 11 404.4 | 8 063.1 | 5 809.9 | n.p. | n.p. | 31 510.4 |
| February | 10 077.3 | 7 695.9 | 5 248.4 | n.p. | n.p. | 28 703.8 |
| March | 11 704.5 | 8 175.4 | 5 760.0 | n.p. | n.p. | 31 681.5 |
| April | 11 533.6 | 8 538.9 | 5 711.3 | n.p. | n.p. | 31 782.2 |
| SEASONALLY ADJUSTED | | | | | | |
| 1997 | | | | | | |
| April | 11 039.0 | 7 062.8 | 5 312.1 | 2 157.3 | 2 990.8 | 28 562.0 |
| May | 11 308.5 | 7 031.6 | 5 341.8 | 2 532.1 | 2 962.5 | 29 176.4 |
| June | 11 236.3 | 7 120.5 | 5 722.1 | 2 450.0 | 3 003.1 | 29 532.0 |
| July | 11 945.0 | 7 842.5 | 5 875.4 | 2 683.2 | 3 015.4 | 31 361.6 |
| August | 11 306.4 | 7 694.4 | 5 449.2 | n.p. | n.p. | 30 254.8 |
| September | 11 420.0 | 7 949.8 | 5 598.6 | n.p. | n.p. | 30 483.6 |
| October | 11 554.7 | 7 712.7 | 5 232.5 | n.p. | n.p. | 30 258.4 |
| November | 11 477.9 | 7 850.7 | 5 581.8 | n.p. | n.p. | 30 882.6 |
| December | 11 334.4 | 7 421.9 | 5 475.0 | n.p. | n.p. | 29 886.7 |
| 1998 | | | | | | |
| January | 12 058.7 | 7 653.5 | 5 519.5 | n.p. | n.p. | 31 154.5 |
| February | 10 617.3 | 8 041.7 | 5 646.2 | n.p. | n.p. | 30 363.3 |
| March | 10 869.9 | 8 303.4 | 5 794.6 | n.p. | n.p. | 31 188.8 |
| April | 11 550.5 | 8 212.1 | 5 634.7 | n.p. | n.p. | 30 940.1 |
| TREND ESTIMATES | | | | | | |
| 1997 | | | | | | |
| April | 11 281.7 | 6 993.7 | 5 388.3 | 2 360.1 | 2 975.3 | 28 999.2 |
| May | 11 348.4 | 7 135.7 | 5 503.4 | 2 423.8 | 2 977.0 | 29 388.3 |
| June | 11 409.5 | 7 336.5 | 5 582.8 | 2 502.9 | 2 994.4 | 29 826.1 |
| July | 11 453.3 | 7 542.2 | 5 609.3 | 2 578.7 | 3 015.7 | 30 199.2 |
| August | 11 498.1 | 7 697.5 | 5 585.2 | n.p. | n.p. | 30 448.9 |
| September | 11 534.3 | 7 764.2 | 5 533.6 | n.p. | n.p. | 30 546.6 |
| October | 11 534.9 | 7 757.6 | 5 486.4 | n.p. | n.p. | 30 540.0 |
| November | 11 485.4 | 7 735.8 | 5 471.3 | n.p. | n.p. | 30 506.2 |
| December | 11 413.8 | 7 747.3 | 5 504.6 | n.p. | n.p. | 30 535.3 |
| 1998 | | | | | | |
| January | 11 337.5 | 7 824.2 | 5 565.6 | n.p. | n.p. | 30 642.2 |
| February | 11 258.4 | 7 940.9 | 5 622.4 | n.p. | n.p. | 30 760.0 |
| March | 11 191.3 | 8 064.8 | 5 668.5 | n.p. | n.p. | 30 865.3 |
| April | 11 144.7 | 8 193.2 | 5 718.3 | n.p. | n.p. | 30 966.2 |

(a) For more information refer to paragraphs 8 and 9 of the Explanatory Notes.

NUMBER OF LIVESTOCK SLAUGHTERED(a): **Original**

| | <i>New South Wales</i> | <i>Victoria</i> | <i>Queensland</i> | <i>South Australia</i> | <i>Western Australia</i> | <i>Tasmania</i> | <i>Australia</i> |
|---------------------------------|----------------------------|-----------------|-------------------|----------------------------|------------------------------|-----------------|------------------|
| <i>Month</i> | '000 | '000 | '000 | '000 | '000 | '000 | '000 |
| BULLS, BULLOCKS AND STEERS | | | | | | | |
| 1994-95 | 1 105.6 | 782.7 | 1 597.1 | 206.1 | 244.0 | 111.2 | 4 056.6 |
| 1995-96 | 1 024.0 | 946.9 | 1 505.8 | 180.4 | 218.0 | 95.4 | 3 988.2 |
| 1996-97 | 1 073.3 | 898.7 | 1 509.3 | 171.1 | 192.3 | 110.2 | 3 977.6 |
| COWS AND HEIFERS | | | | | | | |
| 1994-95 | 943.4 | 684.6 | 960.7 | 218.1 | 186.4 | 96.7 | 3 163.4 |
| 1995-96 | 939.1 | 576.7 | 901.2 | 194.1 | 181.9 | 88.9 | 2 961.5 |
| 1996-97 | 966.9 | 777.2 | 1 008.5 | 197.6 | 214.5 | 93.4 | 3 322.0 |
| TOTAL CATTLE (excluding calves) | | | | | | | |
| 1994-95 | 2 049.0 | 1 467.3 | 2 557.8 | 424.3 | 430.5 | 207.9 | 7 220.0 |
| 1995-96 | 1 963.1 | 1 523.6 | 2 406.9 | 374.5 | 399.9 | 184.2 | 6 949.7 |
| 1996-97 | 2 040.2 | 1 675.9 | 2 517.9 | 368.7 | 406.8 | 203.6 | 7 299.7 |
| CALVES | | | | | | | |
| 1994-95 | 248.3 | 635.6 | 117.1 | 12.0 | 3.8 | 28.8 | 1 047.7 |
| 1995-96 | 244.2 | 589.8 | 91.2 | 12.6 | 3.2 | 41.4 | 984.6 |
| 1996-97 | 257.4 | 697.3 | 120.9 | 15.7 | 5.6 | 43.6 | 1 141.9 |
| SHEEP | | | | | | | |
| 1994-95 | 6 577.8 | 3 229.6 | 770.9 | 3 114.4 | 3 088.1 | 569.3 | 17 499.8 |
| 1995-96 | 5 680.4 | 2 488.0 | 727.5 | 2 370.5 | 2 833.3 | 349.7 | 14 581.1 |
| 1996-97 | 5 241.3 | 2 806.6 | 977.3 | 2 311.8 | 2 635.2 | 384.4 | 14 451.2 |
| LAMBS | | | | | | | |
| 1994-95 | 4 133.7 | 6 303.2 | 608.7 | 1 914.8 | 1 463.7 | 477.2 | 15 289.4 |
| 1995-96 | 3 417.3 | 5 897.7 | 695.3 | 1 905.2 | 1 594.0 | 393.3 | 14 223.1 |
| 1996-97 | 3 621.4 | 5 978.9 | 785.1 | 1 754.0 | 2 081.2 | 364.0 | 14 837.2 |
| PIGS | | | | | | | |
| 1994-95 | 1 505.4 | 1 196.9 | 1 154.4 | 469.6 | 604.1 | 92.9 | 5 119.6 |
| 1995-96 | 1 408.0 | 1 142.1 | 1 080.0 | 466.8 | 562.8 | 86.5 | 4 823.5 |
| 1996-97 | 1 338.4 | 1 197.3 | 1 002.3 | 427.4 | 550.2 | 74.9 | 4 653.9 |
| CHICKENS | | | | | | | |
| 1994-95 | 133 927.4 | 77 193.1 | 56 570.1 | 28 866.2 | 33 938.6 | n.p. | 330 495.4 |
| 1995-96 | 133 756.6 | 85 410.9 | 55 333.1 | 26 948.2 | 34 931.2 | n.p. | 336 380.0 |
| 1996-97 | 133 363.7 | 86 732.6 | 61 088.9 | 28 008.1 | 36 360.2 | n.p. | 345 553.5 |

(a) For more information refer to paragraphs 5 to 9 of the Explanatory Notes.

RED MEAT PRODUCED(a), Beef: All Series

| Month | New South Wales | Victoria | Queensland | South Australia | Western Australia | Tasmania | Australia |
|---------------------|--------------------|----------|------------|--------------------|----------------------|----------|----------------|
| | tonnes | tonnes | tonnes | tonnes | tonnes | tonnes | tonnes |
| ORIGINAL | | | | | | | |
| 1997 | | | | | | | |
| April | 43 406 | 36 393 | 68 938 | 8 366 | 6 474 | 5 331 | 169 905 |
| May | 44 471 | 33 598 | 74 265 | 7 616 | 6 836 | 5 461 | 174 827 |
| June | 38 345 | 30 312 | 67 908 | 7 178 | 6 187 | 4 416 | 156 204 |
| July | 40 660 | 31 773 | 77 114 | 6 820 | 7 367 | 4 467 | 169 720 |
| August | 39 292 | 28 256 | 74 685 | 6 042 | 7 277 | 3 550 | 160 903 |
| September | 38 786 | 28 241 | 75 324 | 5 842 | 8 744 | 2 478 | 161 053 |
| October | 40 657 | 31 971 | 71 366 | 7 881 | 10 077 | 4 113 | 167 562 |
| November | 39 575 | 30 971 | 66 473 | 7 870 | 9 249 | 4 251 | 158 580 |
| December | 39 131 | 35 616 | 44 691 | 6 574 | 9 665 | 4 890 | 140 653 |
| 1998 | | | | | | | |
| January | 37 022 | 35 728 | 39 894 | 5 790 | 9 934 | 5 115 | 133 572 |
| February | 39 704 | 35 579 | 64 000 | 7 883 | 9 397 | 4 693 | 161 349 |
| March | 40 722 | 35 013 | 70 467 | 7 716 | 8 216 | 4 629 | 166 855 |
| April | 39 653 | 33 424 | 67 649 | 8 018 | 7 345 | 5 416 | 162 613 |
| SEASONALLY ADJUSTED | | | | | | | |
| 1997 | | | | | | | |
| April | 39 958 | 32 483 | 67 475 | 9 411 | 7 617 | 4 683 | 161 663 |
| May | 40 087 | 31 842 | 65 479 | 7 366 | 7 936 | 4 430 | 158 835 |
| June | 40 116 | 33 773 | 64 063 | 8 456 | 8 081 | 4 261 | 158 759 |
| July | 40 902 | 33 142 | 67 820 | 8 430 | 8 916 | 4 621 | 163 652 |
| August | 40 986 | 37 662 | 65 045 | 7 696 | 8 187 | 5 858 | 165 110 |
| September | 38 061 | 31 736 | 65 485 | 5 626 | 8 580 | 3 802 | 156 063 |
| October | 37 758 | 29 364 | 65 661 | 7 152 | 8 633 | 4 930 | 153 528 |
| November | 39 179 | 30 534 | 65 128 | 6 601 | 7 651 | 4 591 | 154 841 |
| December | 42 699 | 32 681 | 56 493 | 6 653 | 8 076 | 4 142 | 158 844 |
| 1998 | | | | | | | |
| January | 40 195 | 33 210 | 69 717 | 5 161 | 9 569 | 4 457 | 160 022 |
| February | 40 532 | 33 859 | 72 935 | 7 249 | 8 079 | 4 457 | 163 862 |
| March | 38 543 | 32 267 | 71 735 | 7 082 | 8 295 | 3 773 | 159 409 |
| April | 40 222 | 31 965 | 67 946 | 9 364 | 8 756 | 4 897 | 165 193 |
| TREND ESTIMATES | | | | | | | |
| 1997 | | | | | | | |
| April | 41 359 | 32 121 | 66 740 | 7 749 | 7 734 | 4 421 | 160 560 |
| May | 41 106 | 32 860 | 66 932 | 8 037 | 7 931 | 4 480 | 161 575 |
| June | 40 556 | 33 433 | 66 536 | 8 079 | 8 173 | 4 592 | 161 603 |
| July | 39 938 | 33 625 | 65 908 | 7 883 | 8 352 | 4 701 | 160 834 |
| August | 39 485 | 33 312 | 65 334 | 7 489 | 8 431 | 4 748 | 159 579 |
| September | 39 382 | 32 671 | 64 673 | 7 016 | 8 423 | 4 730 | 158 258 |
| October | 39 520 | 32 073 | 64 231 | 6 576 | 8 390 | 4 637 | 157 236 |
| November | 39 735 | 31 813 | 64 492 | 6 336 | 8 369 | 4 514 | 157 027 |
| December | 40 018 | 31 938 | 65 456 | 6 342 | 8 389 | 4 398 | 157 803 |
| 1998 | | | | | | | |
| January | 40 231 | 32 316 | 66 960 | 6 592 | 8 447 | 4 340 | 159 374 |
| February | 40 264 | 32 674 | 68 549 | 6 975 | 8 505 | 4 332 | 161 055 |
| March | 40 189 | 32 916 | 69 902 | 7 451 | 8 547 | 4 364 | 162 578 |
| April | 40 018 | 33 014 | 70 949 | 7 870 | 8 593 | 4 345 | 163 803 |

(a) For more information refer to paragraph 6 of the Explanatory Notes.

RED MEAT PRODUCED(a), Veal: All Series

| | <i>New South Wales</i> | <i>Victoria</i> | <i>Queensland</i> | <i>South Australia</i> | <i>Western Australia</i> | <i>Tasmania</i> | <i>Australia</i> |
|---------------------|----------------------------|-----------------|-------------------|----------------------------|------------------------------|-----------------|------------------|
| <i>Month</i> | <i>tonnes</i> | <i>tonnes</i> | <i>tonnes</i> | <i>tonnes</i> | <i>tonnes</i> | <i>tonnes</i> | <i>tonnes</i> |
| ORIGINAL | | | | | | | |
| 1997 | | | | | | | |
| April | 1 725 | 891 | 561 | 68 | 20 | 37 | 3 316 |
| May | 1 544 | 1 102 | 531 | 69 | 40 | 39 | 3 339 |
| June | 1 422 | 1 442 | 464 | 80 | 24 | 21 | 3 457 |
| July | 1 848 | 2 060 | 479 | 63 | 27 | 42 | 4 522 |
| August | 1 541 | 3 658 | 438 | 78 | 23 | 302 | 6 044 |
| September | 1 596 | 3 565 | 436 | 90 | 27 | 412 | 6 130 |
| October | 1 664 | 1 618 | 463 | 56 | 26 | 192 | 4 025 |
| November | 1 516 | 638 | 397 | 49 | 23 | 51 | 2 679 |
| December | 1 363 | 286 | 350 | 42 | 26 | 7 | 2 079 |
| 1998 | | | | | | | |
| January | 1 627 | 281 | 496 | 41 | 22 | 6 | 2 478 |
| February | 1 731 | 205 | 470 | 41 | 37 | 7 | 2 495 |
| March | 1 798 | 454 | 542 | 56 | 30 | 14 | 2 899 |
| April | 2 170 | 656 | 533 | 55 | 22 | 45 | 3 485 |
| SEASONALLY ADJUSTED | | | | | | | |
| 1997 | | | | | | | |
| April | 1 583 | 1 325 | 516 | 59 | 30 | 135 | 3 816 |
| May | 1 412 | 1 152 | 480 | 62 | 47 | 116 | 3 169 |
| June | 1 379 | 1 027 | 454 | 80 | 24 | 106 | 2 999 |
| July | 1 588 | 1 331 | 473 | 65 | 21 | 79 | 3 355 |
| August | 1 452 | 1 404 | 440 | 60 | 20 | 88 | 3 669 |
| September | 1 685 | 1 623 | 451 | 74 | 21 | 84 | 4 032 |
| October | 1 549 | 1 347 | 437 | 52 | 24 | 121 | 3 672 |
| November | 1 717 | 1 558 | 463 | 52 | 22 | 203 | 3 830 |
| December | 1 838 | 1 111 | 395 | 59 | 24 | 81 | 3 864 |
| 1998 | | | | | | | |
| January | 1 702 | 1 413 | 485 | 56 | 22 | 96 | 3 586 |
| February | 1 834 | 969 | 501 | 61 | 45 | 123 | 3 861 |
| March | 1 863 | 1 478 | 532 | 51 | 35 | 124 | 4 005 |
| April | 1 971 | 956 | 478 | 47 | 33 | 163 | 3 982 |
| TREND ESTIMATES | | | | | | | |
| 1997 | | | | | | | |
| April | 1 490 | 1 109 | 479 | 56 | 32 | 107 | 3 323 |
| May | 1 468 | 1 177 | 474 | 63 | 31 | 106 | 3 310 |
| June | 1 467 | 1 253 | 469 | 67 | 29 | 102 | 3 351 |
| July | 1 491 | 1 325 | 462 | 68 | 26 | 99 | 3 450 |
| August | 1 534 | 1 391 | 452 | 66 | 23 | 101 | 3 578 |
| September | 1 587 | 1 430 | 442 | 63 | 21 | 107 | 3 697 |
| October | 1 641 | 1 438 | 439 | 60 | 21 | 114 | 3 780 |
| November | 1 694 | 1 402 | 444 | 58 | 23 | 120 | 3 815 |
| December | 1 740 | 1 334 | 455 | 57 | 26 | 122 | 3 808 |
| 1998 | | | | | | | |
| January | 1 788 | 1 267 | 470 | 56 | 29 | 122 | 3 814 |
| February | 1 834 | 1 212 | 484 | 54 | 32 | 124 | 3 847 |
| March | 1 875 | 1 161 | 497 | 53 | 35 | 128 | 3 889 |
| April | 1 919 | 1 129 | 507 | 52 | 37 | 132 | 3 949 |

(a) For more information refer to paragraph 6 of the Explanatory Notes.

RED MEAT PRODUCED(a), Mutton: All Series

| | New South Wales | Victoria | Queensland | South Australia | Western Australia | Tasmania | Australia |
|---------------------|--------------------|----------|------------|--------------------|----------------------|----------|-----------|
| Month | tonnes | tonnes | tonnes | tonnes | tonnes | tonnes | tonnes |
| ORIGINAL | | | | | | | |
| 1997 | | | | | | | |
| April | 10 334 | 5 005 | 1 614 | 5 207 | 4 416 | 989 | 27 734 |
| May | 9 270 | 4 315 | 1 438 | 3 638 | 4 570 | 749 | 24 124 |
| June | 7 666 | 3 474 | 1 383 | 2 958 | 2 292 | 644 | 18 431 |
| July | 9 233 | 3 733 | 1 936 | 1 466 | 2 761 | 639 | 19 769 |
| August | 8 802 | 3 773 | 1 762 | 4 335 | 4 416 | 452 | 23 539 |
| September | 8 764 | 4 663 | 2 076 | 5 089 | 6 090 | 365 | 27 046 |
| October | 11 863 | 6 521 | 2 378 | 5 338 | 6 978 | 675 | 33 753 |
| November | 11 257 | 6 189 | 1 970 | 5 826 | 5 895 | 820 | 31 958 |
| December | 10 392 | 6 861 | 2 102 | 5 605 | 4 488 | 1 169 | 30 617 |
| 1998 | | | | | | | |
| January | 11 038 | 6 505 | 2 574 | 6 604 | 5 432 | 1 158 | 33 311 |
| February | 12 078 | 8 193 | 2 227 | 6 757 | 5 044 | 1 115 | 35 414 |
| March | 10 687 | 6 917 | 2 258 | 6 270 | 4 552 | 1 013 | 31 697 |
| April | 8 800 | 5 050 | 2 052 | 5 042 | 4 732 | 793 | 26 469 |
| SEASONALLY ADJUSTED | | | | | | | |
| 1997 | | | | | | | |
| April | 10 365 | 5 001 | 1 689 | 5 152 | 4 447 | 916 | 28 206 |
| May | 9 262 | 5 151 | 1 375 | 4 240 | 4 276 | 657 | 24 968 |
| June | 9 084 | 5 289 | 1 609 | 4 533 | 3 574 | 674 | 24 743 |
| July | 10 124 | 5 482 | 1 784 | 2 808 | 3 867 | 800 | 25 220 |
| August | 10 372 | 5 891 | 1 830 | 6 608 | 4 913 | 1 016 | 29 812 |
| September | 8 398 | 5 361 | 2 084 | 4 281 | 5 864 | 644 | 27 734 |
| October | 10 624 | 5 175 | 2 301 | 4 485 | 5 893 | 942 | 28 581 |
| November | 10 428 | 5 141 | 1 993 | 3 935 | 4 763 | 755 | 27 400 |
| December | 10 489 | 5 592 | 2 514 | 5 724 | 4 280 | 917 | 28 428 |
| 1998 | | | | | | | |
| January | 10 729 | 5 223 | 2 360 | 5 752 | 5 474 | 884 | 29 882 |
| February | 11 495 | 6 417 | 2 214 | 5 876 | 4 928 | 879 | 32 063 |
| March | 9 876 | 6 309 | 1 981 | 5 493 | 3 935 | 764 | 28 670 |
| April | 9 184 | 5 233 | 2 123 | 5 068 | 4 803 | 704 | 27 689 |
| TREND ESTIMATES | | | | | | | |
| 1997 | | | | | | | |
| April | 9 590 | 4 933 | 1 507 | 4 599 | 4 027 | 761 | 25 650 |
| May | 9 601 | 5 122 | 1 522 | 4 532 | 4 069 | 762 | 25 807 |
| June | 9 598 | 5 308 | 1 606 | 4 479 | 4 238 | 773 | 26 149 |
| July | 9 626 | 5 446 | 1 736 | 4 448 | 4 507 | 789 | 26 644 |
| August | 9 698 | 5 474 | 1 888 | 4 473 | 4 810 | 808 | 27 164 |
| September | 9 852 | 5 413 | 2 041 | 4 568 | 5 090 | 829 | 27 705 |
| October | 10 114 | 5 369 | 2 170 | 4 746 | 5 251 | 850 | 28 293 |
| November | 10 387 | 5 402 | 2 253 | 4 968 | 5 226 | 861 | 28 807 |
| December | 10 557 | 5 507 | 2 276 | 5 178 | 5 046 | 858 | 29 119 |
| 1998 | | | | | | | |
| January | 10 605 | 5 651 | 2 260 | 5 361 | 4 837 | 848 | 29 348 |
| February | 10 508 | 5 782 | 2 221 | 5 517 | 4 685 | 831 | 29 488 |
| March | 10 327 | 5 871 | 2 172 | 5 623 | 4 569 | 808 | 29 491 |
| April | 9 988 | 5 915 | 2 119 | 5 624 | 4 503 | 767 | 29 309 |

(a) For more information refer to paragraph 6 of the Explanatory Notes.

RED MEAT PRODUCED(a), Lamb: All Series

| | New South Wales | Victoria | Queensland | South Australia | Western Australia | Tasmania | Australia |
|---------------------|--------------------|----------|------------|--------------------|----------------------|----------|-----------|
| Month | tonnes | tonnes | tonnes | tonnes | tonnes | tonnes | tonnes |
| ORIGINAL | | | | | | | |
| 1997 | | | | | | | |
| April | 5 992 | 10 666 | 1 301 | 3 485 | 3 366 | 650 | 25 935 |
| May | 5 475 | 9 849 | 1 266 | 3 453 | 3 959 | 791 | 25 274 |
| June | 4 738 | 9 036 | 1 073 | 3 288 | 2 591 | 564 | 21 364 |
| July | 5 883 | 10 112 | 1 395 | 1 448 | 2 819 | 677 | 22 335 |
| August | 5 669 | 8 498 | 1 296 | 2 380 | 2 575 | 415 | 20 833 |
| September | 5 830 | 10 001 | 1 332 | 2 766 | 3 992 | 436 | 24 358 |
| October | 6 339 | 10 759 | 1 255 | 3 846 | 3 933 | 612 | 26 743 |
| November | 5 610 | 10 558 | 951 | 3 226 | 3 164 | 578 | 24 088 |
| December | 5 673 | 11 001 | 982 | 2 891 | 2 416 | 583 | 23 545 |
| 1998 | | | | | | | |
| January | 5 451 | 10 135 | 1 209 | 3 092 | 2 170 | 831 | 22 888 |
| February | 5 684 | 8 753 | 1 073 | 3 552 | 2 427 | 619 | 22 109 |
| March | 6 053 | 9 248 | 1 169 | 3 917 | 2 271 | 809 | 23 466 |
| April | 6 271 | 10 144 | 1 120 | 3 763 | 2 416 | 726 | 24 441 |
| SEASONALLY ADJUSTED | | | | | | | |
| 1997 | | | | | | | |
| April | 5 350 | 10 150 | 1 144 | 3 420 | 3 548 | 629 | 25 035 |
| May | 5 422 | 9 721 | 1 163 | 3 432 | 3 805 | 652 | 24 377 |
| June | 5 236 | 10 137 | 1 223 | 3 808 | 3 535 | 508 | 23 862 |
| July | 5 507 | 10 340 | 1 212 | 1 860 | 3 514 | 708 | 23 339 |
| August | 5 500 | 9 199 | 1 081 | 2 940 | 2 460 | 559 | 21 840 |
| September | 5 183 | 9 909 | 1 391 | 2 434 | 2 599 | 513 | 22 865 |
| October | 5 719 | 9 483 | 1 102 | 3 132 | 2 582 | 688 | 22 352 |
| November | 6 677 | 9 811 | 1 231 | 3 090 | 2 845 | 657 | 24 082 |
| December | 6 320 | 10 363 | 1 308 | 3 254 | 3 468 | 570 | 25 208 |
| 1998 | | | | | | | |
| January | 5 911 | 10 286 | 1 272 | 3 253 | 2 958 | 748 | 24 398 |
| February | 6 080 | 9 402 | 1 137 | 3 438 | 2 706 | 604 | 23 511 |
| March | 5 744 | 9 217 | 1 123 | 3 188 | 2 447 | 702 | 22 214 |
| April | 5 737 | 10 374 | 1 004 | 3 690 | 2 560 | 695 | 23 963 |
| TREND ESTIMATES | | | | | | | |
| 1997 | | | | | | | |
| April | 5 323 | 9 898 | 1 176 | 3 165 | 3 582 | 625 | 23 918 |
| May | 5 305 | 9 947 | 1 165 | 3 111 | 3 553 | 613 | 23 792 |
| June | 5 306 | 9 936 | 1 172 | 3 002 | 3 392 | 602 | 23 502 |
| July | 5 363 | 9 869 | 1 186 | 2 882 | 3 164 | 595 | 23 162 |
| August | 5 485 | 9 799 | 1 203 | 2 793 | 2 945 | 597 | 22 927 |
| September | 5 670 | 9 785 | 1 220 | 2 779 | 2 816 | 603 | 22 957 |
| October | 5 879 | 9 812 | 1 236 | 2 861 | 2 792 | 614 | 23 241 |
| November | 6 047 | 9 853 | 1 243 | 3 025 | 2 846 | 630 | 23 649 |
| December | 6 123 | 9 883 | 1 235 | 3 185 | 2 901 | 645 | 23 917 |
| 1998 | | | | | | | |
| January | 6 107 | 9 887 | 1 209 | 3 284 | 2 892 | 660 | 23 957 |
| February | 6 027 | 9 859 | 1 170 | 3 363 | 2 813 | 671 | 23 822 |
| March | 5 929 | 9 826 | 1 124 | 3 443 | 2 704 | 681 | 23 622 |
| April | 5 798 | 9 832 | 1 092 | 3 480 | 2 596 | 683 | 23 443 |

(a) For more information refer to paragraph 6 of the Explanatory Notes.

RED MEAT PRODUCED(a), Pig Meat: All Series

| | <i>New South Wales</i> | <i>Victoria</i> | <i>Queensland</i> | <i>South Australia</i> | <i>Western Australia</i> | <i>Tasmania</i> | <i>Australia</i> |
|---------------------|----------------------------|-----------------|-------------------|----------------------------|------------------------------|-----------------|------------------|
| <i>Month</i> | <i>tonnes</i> | <i>tonnes</i> | <i>tonnes</i> | <i>tonnes</i> | <i>tonnes</i> | <i>tonnes</i> | <i>tonnes</i> |
| ORIGINAL | | | | | | | |
| 1997 | | | | | | | |
| April | 7 259 | 7 982 | 6 910 | 2 507 | 3 144 | 425 | 28 684 |
| May | 7 485 | 8 245 | 6 829 | 2 827 | 3 729 | 496 | 30 040 |
| June | 8 180 | 7 694 | 6 398 | 2 532 | 3 888 | 389 | 29 167 |
| July | 8 247 | 8 594 | 7 157 | 2 446 | 3 072 | 437 | 29 976 |
| August | 7 105 | 7 596 | 6 575 | 2 665 | 2 939 | 362 | 27 264 |
| September | 8 064 | 7 943 | 6 414 | 2 320 | 3 014 | 345 | 28 129 |
| October | 7 950 | 8 003 | 6 984 | 2 263 | 2 812 | 430 | 28 465 |
| November | 7 297 | 7 211 | 6 699 | 2 273 | 2 654 | 362 | 26 519 |
| December | 8 862 | 8 100 | 6 348 | 1 765 | 2 724 | 447 | 28 275 |
| 1998 | | | | | | | |
| January | 6 747 | 7 577 | 6 404 | 2 018 | 2 285 | 436 | 25 491 |
| February | 7 150 | 7 393 | 6 837 | 2 586 | 3 100 | 351 | 27 441 |
| March | 8 252 | 8 702 | 6 758 | 2 126 | 3 048 | 351 | 29 269 |
| April | 8 133 | 9 104 | 6 681 | 1 823 | 2 998 | 396 | 29 162 |
| SEASONALLY ADJUSTED | | | | | | | |
| 1997 | | | | | | | |
| April | 7 052 | 8 050 | 7 123 | 2 641 | 2 914 | 438 | 28 792 |
| May | 7 098 | 7 559 | 6 486 | 2 370 | 3 477 | 447 | 27 725 |
| June | 7 565 | 7 853 | 6 013 | 2 629 | 3 751 | 392 | 28 339 |
| July | 7 793 | 7 862 | 6 735 | 2 475 | 2 907 | 407 | 28 726 |
| August | 7 389 | 8 052 | 6 679 | 2 352 | 2 916 | 375 | 27 725 |
| September | 7 797 | 7 635 | 6 140 | 2 331 | 3 003 | 361 | 27 456 |
| October | 7 920 | 7 353 | 6 885 | 2 360 | 2 716 | 426 | 27 972 |
| November | 7 932 | 7 893 | 7 037 | 1 969 | 2 780 | 398 | 27 566 |
| December | 7 916 | 7 403 | 6 213 | 2 073 | 2 825 | 378 | 27 006 |
| 1998 | | | | | | | |
| January | 8 081 | 8 654 | 7 392 | 2 262 | 2 823 | 472 | 29 213 |
| February | 8 160 | 8 236 | 7 183 | 2 572 | 3 316 | 394 | 30 009 |
| March | 8 097 | 8 752 | 6 855 | 2 344 | 2 956 | 359 | 28 908 |
| April | 7 878 | 9 112 | 6 833 | 1 900 | 2 781 | 389 | 28 983 |
| TREND ESTIMATES | | | | | | | |
| 1997 | | | | | | | |
| April | 7 092 | 7 547 | 6 500 | 2 529 | 3 427 | 434 | 27 735 |
| May | 7 201 | 7 688 | 6 497 | 2 528 | 3 350 | 423 | 27 935 |
| June | 7 369 | 7 795 | 6 493 | 2 507 | 3 259 | 409 | 28 103 |
| July | 7 538 | 7 819 | 6 493 | 2 461 | 3 149 | 397 | 28 129 |
| August | 7 670 | 7 775 | 6 514 | 2 385 | 3 019 | 390 | 27 971 |
| September | 7 771 | 7 705 | 6 564 | 2 295 | 2 897 | 389 | 27 759 |
| October | 7 855 | 7 666 | 6 661 | 2 231 | 2 823 | 395 | 27 671 |
| November | 7 930 | 7 738 | 6 778 | 2 209 | 2 819 | 403 | 27 837 |
| December | 7 994 | 7 910 | 6 867 | 2 219 | 2 873 | 408 | 28 167 |
| 1998 | | | | | | | |
| January | 8 038 | 8 162 | 6 940 | 2 240 | 2 923 | 407 | 28 571 |
| February | 8 056 | 8 435 | 6 984 | 2 250 | 2 956 | 402 | 28 928 |
| March | 8 054 | 8 697 | 7 004 | 2 241 | 2 972 | 395 | 29 205 |
| April | 8 042 | 8 928 | 6 969 | 2 220 | 2 985 | 385 | 29 386 |

(a) For more information refer to paragraph 6 of the Explanatory Notes.

TOTAL RED MEAT PRODUCED(a): All Series

| Month | New South Wales | Victoria | Queensland | South Australia | Western Australia | Tasmania | Australia |
|---------------------|--------------------|----------|------------|--------------------|----------------------|----------|-----------|
| | tonnes | tonnes | tonnes | tonnes | tonnes | tonnes | tonnes |
| ORIGINAL | | | | | | | |
| 1997 | | | | | | | |
| April | 68 717 | 60 936 | 79 324 | 19 633 | 17 420 | 7 431 | 255 573 |
| May | 68 244 | 57 109 | 84 328 | 17 603 | 19 134 | 7 536 | 257 605 |
| June | 60 351 | 51 957 | 77 226 | 16 035 | 14 982 | 6 034 | 228 624 |
| July | 65 871 | 56 271 | 88 082 | 12 243 | 16 046 | 6 262 | 246 322 |
| August | 62 409 | 51 781 | 84 757 | 15 500 | 17 229 | 5 081 | 238 584 |
| September | 63 041 | 54 412 | 85 582 | 16 106 | 21 868 | 4 037 | 246 716 |
| October | 68 473 | 58 871 | 82 446 | 19 384 | 23 825 | 6 022 | 260 548 |
| November | 65 256 | 55 568 | 76 491 | 19 244 | 20 985 | 6 062 | 243 824 |
| December | 65 421 | 61 865 | 54 472 | 16 877 | 19 319 | 7 096 | 225 168 |
| 1998 | | | | | | | |
| January | 61 885 | 60 227 | 50 577 | 17 545 | 19 843 | 7 547 | 217 740 |
| February | 66 347 | 60 123 | 74 607 | 20 819 | 20 005 | 6 786 | 248 807 |
| March | 67 511 | 60 334 | 81 195 | 20 085 | 18 117 | 6 817 | 254 186 |
| April | 65 028 | 58 378 | 78 036 | 18 701 | 17 512 | 7 375 | 246 169 |
| SEASONALLY ADJUSTED | | | | | | | |
| 1997 | | | | | | | |
| April | 64 309 | 57 009 | 77 947 | 20 683 | 18 555 | 6 801 | 247 512 |
| May | 63 281 | 55 424 | 74 983 | 17 470 | 19 540 | 6 302 | 239 075 |
| June | 63 380 | 58 079 | 73 362 | 19 505 | 18 966 | 5 941 | 238 703 |
| July | 65 914 | 58 157 | 78 023 | 15 638 | 19 226 | 6 615 | 244 293 |
| August | 65 697 | 62 209 | 75 075 | 19 656 | 18 496 | 7 896 | 248 156 |
| September | 61 124 | 56 264 | 75 551 | 14 747 | 20 066 | 5 404 | 238 149 |
| October | 63 571 | 52 721 | 76 386 | 17 180 | 19 849 | 7 108 | 236 104 |
| November | 65 932 | 54 938 | 75 852 | 15 648 | 18 062 | 6 605 | 237 719 |
| December | 69 261 | 57 150 | 66 923 | 17 762 | 18 674 | 6 088 | 243 349 |
| 1998 | | | | | | | |
| January | 66 617 | 58 786 | 81 227 | 16 483 | 20 846 | 6 656 | 247 101 |
| February | 68 102 | 58 882 | 83 969 | 19 195 | 19 073 | 6 457 | 253 306 |
| March | 64 124 | 58 023 | 82 226 | 18 160 | 17 668 | 5 721 | 243 207 |
| April | 64 991 | 57 639 | 78 384 | 20 069 | 18 934 | 6 848 | 249 810 |
| TREND ESTIMATES | | | | | | | |
| 1997 | | | | | | | |
| April | 64 853 | 55 608 | 76 402 | 18 099 | 18 802 | 6 348 | 241 185 |
| May | 64 680 | 56 794 | 76 589 | 18 271 | 18 933 | 6 384 | 242 418 |
| June | 64 297 | 57 725 | 76 276 | 18 134 | 19 091 | 6 478 | 242 709 |
| July | 63 956 | 58 084 | 75 786 | 17 743 | 19 199 | 6 581 | 242 219 |
| August | 63 871 | 57 751 | 75 391 | 17 206 | 19 228 | 6 643 | 241 220 |
| September | 64 263 | 57 003 | 74 941 | 16 721 | 19 247 | 6 659 | 240 377 |
| October | 65 008 | 56 358 | 74 737 | 16 475 | 19 277 | 6 611 | 240 222 |
| November | 65 792 | 56 208 | 75 211 | 16 597 | 19 283 | 6 528 | 241 136 |
| December | 66 432 | 56 572 | 76 288 | 16 981 | 19 236 | 6 430 | 242 815 |
| 1998 | | | | | | | |
| January | 66 768 | 57 283 | 77 838 | 17 534 | 19 128 | 6 377 | 245 064 |
| February | 66 689 | 57 961 | 79 409 | 18 159 | 18 991 | 6 359 | 247 141 |
| March | 66 374 | 58 471 | 80 698 | 18 810 | 18 827 | 6 376 | 248 785 |
| April | 65 766 | 58 818 | 81 637 | 19 247 | 18 713 | 6 313 | 249 890 |

(a) For more information refer to paragraph 6 of the Explanatory Notes.

CHICKEN MEAT PRODUCED(a): All Series

| Month | New South Wales | Victoria | Queensland | South Australia | Western Australia | Australia |
|---------------------|--------------------|----------|------------|-----------------|-------------------|-----------|
| | tonnes | tonnes | tonnes | tonnes | tonnes | tonnes |
| ORIGINAL | | | | | | |
| 1997 | | | | | | |
| April | 17 574 | 10 256 | 7 141 | 3 603 | 3 771 | 42 345 |
| May | 16 568 | 10 367 | 6 751 | 3 330 | 3 573 | 40 589 |
| June | 17 680 | 9 999 | 7 505 | 3 336 | 3 707 | 42 228 |
| July | 19 391 | 13 039 | 8 246 | 4 129 | 4 172 | 48 978 |
| August | 16 553 | 10 842 | 6 696 | n.p. | n.p. | 41 013 |
| September | 18 389 | 11 910 | 7 309 | n.p. | n.p. | 44 901 |
| October | 18 895 | 13 479 | 7 853 | n.p. | n.p. | 48 426 |
| November | 16 571 | 11 500 | 6 989 | n.p. | n.p. | 42 578 |
| December | 18 380 | 13 215 | 7 815 | n.p. | n.p. | 47 854 |
| 1998 | | | | | | |
| January | 17 546 | 13 076 | 7 730 | n.p. | n.p. | 46 974 |
| February | 15 490 | 12 372 | 7 079 | n.p. | n.p. | 42 859 |
| March | 18 325 | 13 438 | 7 779 | n.p. | n.p. | 48 085 |
| April | 18 081 | 13 519 | 7 486 | n.p. | n.p. | 47 255 |
| SEASONALLY ADJUSTED | | | | | | |
| 1997 | | | | | | |
| April | 17 455 | 10 145 | 7 134 | 3 165 | 3 797 | 41 696 |
| May | 17 476 | 10 694 | 7 104 | 3 658 | 3 727 | 42 659 |
| June | 17 635 | 10 523 | 7 672 | 3 476 | 3 740 | 43 045 |
| July | 18 405 | 12 362 | 7 697 | 3 846 | 3 763 | 46 073 |
| August | 17 789 | 11 204 | 7 178 | n.p. | n.p. | 43 933 |
| September | 17 715 | 12 004 | 7 574 | n.p. | n.p. | 44 628 |
| October | 18 231 | 12 406 | 7 128 | n.p. | n.p. | 45 647 |
| November | 17 840 | 12 763 | 7 423 | n.p. | n.p. | 45 968 |
| December | 17 191 | 12 102 | 7 306 | n.p. | n.p. | 44 352 |
| 1998 | | | | | | |
| January | 18 434 | 13 193 | 7 458 | n.p. | n.p. | 47 320 |
| February | 16 324 | 12 795 | 7 574 | n.p. | n.p. | 45 134 |
| March | 16 945 | 13 269 | 7 788 | n.p. | n.p. | 46 768 |
| April | 17 894 | 13 257 | 7 468 | n.p. | n.p. | 46 219 |
| TREND ESTIMATES | | | | | | |
| 1997 | | | | | | |
| April | 17 067 | 10 355 | 7 175 | 3 366 | 3 735 | 41 697 |
| May | 17 444 | 10 544 | 7 324 | 3 468 | 3 733 | 42 512 |
| June | 17 747 | 10 899 | 7 424 | 3 582 | 3 758 | 43 411 |
| July | 17 928 | 11 324 | 7 463 | 3 681 | 3 791 | 44 187 |
| August | 18 015 | 11 733 | 7 444 | n.p. | n.p. | 44 765 |
| September | 18 009 | 12 052 | 7 395 | n.p. | n.p. | 45 107 |
| October | 17 921 | 12 274 | 7 355 | n.p. | n.p. | 45 309 |
| November | 17 772 | 12 468 | 7 351 | n.p. | n.p. | 45 487 |
| December | 17 597 | 12 645 | 7 398 | n.p. | n.p. | 45 679 |
| 1998 | | | | | | |
| January | 17 445 | 12 827 | 7 470 | n.p. | n.p. | 45 905 |
| February | 17 326 | 12 990 | 7 534 | n.p. | n.p. | 46 092 |
| March | 17 251 | 13 125 | 7 582 | n.p. | n.p. | 46 236 |
| April | 17 205 | 13 234 | 7 637 | n.p. | n.p. | 46 325 |

(a) For more information refer to paragraphs 8 and 9 of the Explanatory Notes.

MEAT PRODUCED(a): Original

| Period | New South Wales tonnes | Victoria tonnes | Queensland tonnes | South Australia tonnes | Western Australia tonnes | Tasmania tonnes | Australia tonnes |
|----------------|---------------------------|--------------------|----------------------|---------------------------|-----------------------------|--------------------|---------------------|
| BEEF | | | | | | | |
| 1994-95 | 471 183 | 335 059 | 697 750 | 99 108 | 97 140 | 49 907 | 1 765 607 |
| 1995-96 | 458 209 | 348 649 | 655 664 | 89 704 | 94 859 | 45 377 | 1 710 922 |
| 1996-97 | 471 231 | 373 818 | 687 802 | 85 478 | 91 369 | 51 723 | 1 777 702 |
| VEAL | | | | | | | |
| 1994-95 | 16 677 | 14 428 | 4 918 | 433 | 250 | 977 | 37 810 |
| 1995-96 | 16 273 | 12 009 | 3 854 | 396 | 213 | 875 | 33 774 |
| 1996-97 | 16 444 | 14 293 | 5 579 | 514 | 319 | 907 | 38 140 |
| MUTTON | | | | | | | |
| 1994-95 | 131 052 | 64 440 | 15 308 | 66 759 | 61 868 | 11 230 | 353 590 |
| 1995-96 | 121 376 | 50 910 | 14 161 | 55 600 | 57 428 | 7 414 | 309 577 |
| 1996-97 | 109 198 | 55 545 | 19 646 | 51 778 | 52 164 | 8 170 | 298 473 |
| LAMB | | | | | | | |
| 1994-95 | 71 738 | 111 202 | 10 621 | 36 147 | 22 359 | 8 412 | 267 968 |
| 1995-96 | 62 648 | 110 172 | 12 584 | 37 735 | 28 139 | 7 407 | 264 721 |
| 1996-97 | 67 174 | 111 403 | 14 348 | 34 890 | 35 701 | 6 876 | 275 054 |
| PIG MEAT | | | | | | | |
| 1994-95 | 102 175 | 84 728 | 83 143 | 32 063 | 37 109 | 5 982 | 351 299 |
| 1995-96 | 95 788 | 83 052 | 77 696 | 31 695 | 35 341 | 5 634 | 333 967 |
| 1996-97 | 88 753 | 85 872 | 73 809 | 29 842 | 38 837 | 4 934 | 325 914 |
| TOTAL RED MEAT | | | | | | | |
| 1994-95 | 792 826 | 609 857 | 811 740 | 234 511 | 218 725 | 76 509 | 2 776 274 |
| 1995-96 | 754 293 | 604 792 | 763 960 | 215 131 | 215 979 | 66 707 | 2 652 960 |
| 1996-97 | 752 800 | 640 931 | 801 184 | 202 501 | 218 390 | 72 610 | 2 715 283 |
| CHICKEN MEAT | | | | | | | |
| 1994-95 | 199 589 | 109 515 | 76 337 | 39 103 | 42 007 | n.p. | 466 551 |
| 1995-96 | 199 152 | 127 736 | 71 607 | 37 691 | 44 358 | n.p. | 480 544 |
| 1996-97 | 200 277 | 129 930 | 80 485 | 38 932 | 46 789 | n.p. | 496 414 |

(a) For more information refer to paragraphs 5 to 9 of the Explanatory Notes.

STOCKS OF FROZEN MEAT, Australia(a): Original

| | <i>Beef and Veal</i> | <i>Mutton</i> | <i>Lamb</i> | <i>Pork</i> | <i>Goat</i> | <i>Offal</i> | <i>Total</i> |
|----------------------------|----------------------|---------------|---------------|---------------|---------------|---------------|---------------|
| <i>At last Saturday of</i> | <i>tonnes</i> | <i>tonnes</i> | <i>tonnes</i> | <i>tonnes</i> | <i>tonnes</i> | <i>tonnes</i> | <i>tonnes</i> |
| 1997 | | | | | | | |
| March | 22 353 | 3 952 | 3 327 | 1 646 | 14 | 5 777 | 37 069 |
| April | 23 584 | 4 594 | 3 537 | 1 962 | 24 | 5 608 | 39 309 |
| May | 24 182 | 4 062 | 3 896 | 1 563 | 43 | 5 867 | 39 613 |
| June | 24 732 | 3 839 | 3 348 | 1 758 | 28 | 5 760 | 39 465 |
| July | 22 642 | 3 873 | 3 207 | 1 955 | 47 | 5 175 | 36 899 |
| August | 23 908 | 4 105 | 3 132 | 2 739 | 64 | 5 193 | 39 141 |
| September | 24 215 | 4 057 | 3 726 | 2 692 | 58 | 4 475 | 39 222 |
| October | 23 365 | 4 625 | 3 714 | 2 651 | 61 | 4 133 | 38 549 |
| November | 24 420 | 4 985 | 3 801 | 2 092 | 128 | 4 238 | 39 664 |
| December | 22 887 | 4 695 | 3 196 | 1 958 | 116 | 4 190 | 37 042 |
| 1998 | | | | | | | |
| January | 23 516 | 4 651 | 2 606 | 1 945 | 187 | 4 460 | 37 365 |
| February | 23 860 | 5 221 | 2 328 | 2 132 | 301 | 4 678 | 38 520 |
| March | 23 875 | 5 392 | 2 556 | 2 257 | 379 | 4 605 | 39 064 |

(a) For more information refer to paragraph 10 of the Explanatory Notes.

Source: Australian Meat and Livestock Corporation

EXPORTS OF FRESH FROZEN AND PROCESSED MEAT, Australia(a): Original

| Period | FRESH, CHILLED OR FROZEN MEAT..... | | | | | | | | | PROCESSED MEAT..... | |
|----------------|------------------------------------|----------------|---------------|----------------|-----------------|------------------|---------------|----------------|--------|---------------------|-------------|
| | Beef bone -in | Beef bone -out | Veal bone -in | Veal bone -out | Mutton bone -in | Mutton bone -out | Lamb bone -in | Lamb bone -out | Pork | Bacon and Ham | Canned meat |
| | tonnes | tonnes | tonnes | tonnes | tonnes | tonnes | tonnes | tonnes | tonnes | tonnes | tonnes |
| 1994-95 | 59 811 | 717 405 | 1 983 | 6 921 | 103 376 | 65 388 | 48 584 | 4 595 | 5 459 | 160 | 6 808 |
| 1995-96 | 50 729 | 702 633 | 1 697 | 5 348 | 80 980 | 64 266 | 46 291 | 7 756 | 5 656 | 359 | 9 086 |
| 1996-97 | 48 603 | 692 102 | 1 172 | 3 761 | 92 352 | 50 671 | 54 106 | 8 334 | 6 674 | 320 | 11 697 |
| 1997 | | | | | | | | | | | |
| March | 4 059 | 62 789 | 54 | 239 | 8 351 | 4 288 | 4 658 | 733 | 370 | 16 | 940 |
| April | 2 877 | 69 165 | 87 | 334 | 8 557 | 3 672 | 5 424 | 825 | 401 | 3 | 989 |
| May | 1 924 | 70 962 | 123 | 305 | 8 177 | 4 157 | 5 558 | 656 | 949 | 17 | 995 |
| June | 3 454 | 63 738 | 93 | 355 | 6 810 | 4 233 | 5 516 | 576 | 989 | 33 | 1 026 |
| July | 4 340 | 72 233 | 157 | 461 | 5 772 | 4 063 | 4 946 | 675 | 1 234 | 6 | 1 180 |
| August | 6 466 | 66 120 | 151 | 606 | 6 060 | 4 418 | 4 088 | 525 | 902 | 0 | 1 064 |
| September | 6 072 | 59 522 | 130 | 697 | 8 216 | 5 224 | 4 735 | 599 | 1 040 | 17 | 1 236 |
| October | 6 568 | 70 822 | 186 | 669 | 8 224 | 5 757 | 6 081 | 727 | 1 113 | 2 | 1 243 |
| November | 7 458 | 62 436 | 171 | 369 | 11 405 | 7 180 | 6 330 | 765 | 1 027 | 19 | 1 408 |
| December | 4 421 | 69 277 | 60 | 444 | 10 001 | 6 563 | 5 802 | 748 | 660 | 32 | 1 029 |
| 1998 | | | | | | | | | | | |
| January | 1 622 | 42 262 | 90 | 169 | 8 955 | 4 624 | 3 974 | 541 | 773 | 0 | 868 |
| February | 1 401 | 66 025 | 158 | 301 | 11 522 | 4 486 | 5 095 | 763 | 825 | 33 | 889 |
| March | 1 648 | 74 496 | 97 | 371 | 12 367 | 4 828 | 6 177 | 850 | 997 | 16 | 1 021 |

(a) For more information refer to paragraph 11 and 12 of the Explanatory Notes.

EXPORTS OF LIVE SHEEP AND CATTLE, Australia(a): Original

| <i>Period</i> | <i>Number</i> '000 | <i>Gross weight</i> '000 tonnes | <i>Gross value</i> \$'000 | <i>Unit value</i> \$ |
|----------------|-----------------------|------------------------------------|------------------------------|-------------------------|
| SHEEP | | | | |
| 1994-95 | 5 697.0 | 290.2 | 184 291 | 32.35 |
| 1995-96 | 5 879.9 | 296.9 | 226 913 | 38.59 |
| 1996-97 | 5 237.2 | 269.8 | 189 944 | 36.27 |
| 1997 | | | | |
| March | 471.7 | 23.2 | 17 206 | 36.48 |
| April | 335.5 | 17.4 | 12 285 | 36.62 |
| May | 357.3 | 17.6 | 13 314 | 37.26 |
| June | 294.0 | 13.3 | 11 844 | 40.28 |
| July | 539.9 | 27.3 | 21 603 | 40.01 |
| August | 277.9 | 14.7 | 10 924 | 39.31 |
| September | 469.5 | 23.6 | 16 817 | 35.82 |
| October | 351.4 | 18.5 | 13 746 | 39.12 |
| November | 452.8 | 24.1 | 17 444 | 38.53 |
| December | 409.0 | 22.1 | 15 902 | 38.88 |
| 1998 | | | | |
| January | 510.1 | 44.5 | 19 598 | 38.42 |
| February | 443.9 | 22.6 | 16 621 | 37.44 |
| March | 324.1 | 17.6 | 12 392 | 38.24 |
| CATTLE | | | | |
| 1994-95 | 385.7 | 136.5 | 201 948 | 523.52 |
| 1995-96 | 615.9 | 219.0 | 343 699 | 558.07 |
| 1996-97 | 863.8 | 313.9 | 427 721 | 495.19 |
| 1997 | | | | |
| March | 67.9 | 26.1 | 32 870 | 484.16 |
| April | 89.6 | 32.9 | 44 544 | 497.06 |
| May | 93.0 | 33.9 | 48 174 | 517.94 |
| June | 105.8 | 39.9 | 53 042 | 501.56 |
| July | 84.5 | 29.6 | 42 319 | 500.66 |
| August | 81.6 | 31.7 | 39 854 | 488.28 |
| September | 87.1 | 31.1 | 43 905 | 504.31 |
| October | 57.3 | 19.7 | 28 219 | 492.13 |
| November | 50.4 | 17.3 | 22 209 | 440.31 |
| December | 64.5 | 25.4 | 33 046 | 512.32 |
| 1998 | | | | |
| January | 33.1 | 12.5 | 16 533 | 499.84 |
| February | 56.9 | 23.5 | 29 081 | 510.87 |
| March | 40.6 | 15.2 | 19 205 | 472.53 |

(a) For more information refer to paragraph 13 of the Explanatory Notes.

WHOLE MILK INTAKE, By Factories(a): All Series

| | <i>New South Wales</i> | <i>Victoria</i> | <i>Queensland</i> | <i>South Australia</i> | <i>Western Australia</i> | <i>Tasmania</i> | <i>Australia</i> |
|---------------------|----------------------------|-----------------|-------------------|----------------------------|------------------------------|-----------------|------------------|
| <i>Month</i> | <i>ML</i> | <i>ML</i> | <i>ML</i> | <i>ML</i> | <i>ML</i> | <i>ML</i> | <i>ML</i> |
| ORIGINAL | | | | | | | |
| 1997 | | | | | | | |
| March | 98 | 390 | 67 | 40 | 30 | 48 | 672 |
| April | 90 | 284 | 61 | 37 | 28 | 37 | 537 |
| May | 91 | 263 | 62 | 39 | 29 | 28 | 511 |
| June | 90 | 245 | 64 | 38 | 30 | 16 | 483 |
| July | 96 | 276 | 69 | 42 | 33 | 12 | 528 |
| August | 105 | 420 | 73 | 47 | 34 | 21 | 698 |
| September | 113 | 648 | 72 | 54 | 34 | 53 | 973 |
| October | 125 | 816 | 76 | 62 | 36 | 82 | 1 197 |
| November | 117 | 763 | 73 | 58 | 31 | 81 | 1 124 |
| December | 112 | 689 | 72 | 56 | 29 | 74 | 1 033 |
| 1998 | | | | | | | |
| January | 107 | 565 | 71 | 50 | 30 | 58 | 880 |
| February | 93 | 448 | 61 | 42 | 28 | 45 | 716 |
| March | 96 | 405 | 65 | 43 | 32 | 44 | 684 |
| SEASONALLY ADJUSTED | | | | | | | |
| 1997 | | | | | | | |
| March | 100 | 464 | 67 | 49 | 31 | 46 | 756 |
| April | 100 | 451 | 67 | 47 | 31 | 47 | 743 |
| May | 100 | 486 | 69 | 45 | 30 | 46 | 776 |
| June | 99 | 502 | 69 | 46 | 31 | 46 | 793 |
| July | 101 | 512 | 70 | 45 | 30 | 46 | 805 |
| August | 104 | 504 | 71 | 45 | 30 | 42 | 796 |
| September | 106 | 501 | 69 | 45 | 31 | 46 | 800 |
| October | 110 | 506 | 70 | 47 | 32 | 50 | 815 |
| November | 109 | 485 | 71 | 48 | 32 | 48 | 791 |
| December | 103 | 472 | 67 | 49 | 32 | 46 | 769 |
| 1998 | | | | | | | |
| January | 100 | 455 | 66 | 48 | 32 | 45 | 747 |
| February | 101 | 470 | 65 | 50 | 32 | 41 | 758 |
| March | 98 | 482 | 65 | 52 | 33 | 42 | 772 |
| TREND ESTIMATES | | | | | | | |
| 1997 | | | | | | | |
| March | 99 | 462 | 67 | 47 | 30 | 46 | 750 |
| April | 99 | 470 | 67 | 47 | 30 | 46 | 759 |
| May | 100 | 481 | 68 | 46 | 30 | 46 | 772 |
| June | 101 | 494 | 69 | 46 | 30 | 46 | 786 |
| July | 103 | 503 | 70 | 45 | 30 | 46 | 797 |
| August | 105 | 507 | 70 | 45 | 30 | 46 | 804 |
| September | 106 | 504 | 70 | 46 | 31 | 47 | 803 |
| October | 107 | 495 | 70 | 47 | 31 | 47 | 797 |
| November | 106 | 485 | 69 | 48 | 32 | 47 | 786 |
| December | 104 | 477 | 68 | 48 | 32 | 46 | 776 |
| 1998 | | | | | | | |
| January | 102 | 472 | 67 | 49 | 32 | 45 | 767 |
| February | 101 | 469 | 66 | 50 | 32 | 43 | 761 |
| March | 99 | 467 | 65 | 51 | 33 | 42 | 756 |

(a) For more information refer to paragraph 14 of the Explanatory Notes.

Source: Original series data from Australian Dairy Corporation

MARKET MILK SALES, By Factories(a): All Series

| | <i>New South Wales</i> | <i>Victoria</i> | <i>Queensland</i> | <i>South Australia</i> | <i>Western Australia</i> | <i>Tasmania</i> | <i>Australia</i> |
|---------------------|------------------------|-----------------|-------------------|------------------------|--------------------------|-----------------|------------------|
| <i>Month</i> | <i>ML</i> | <i>ML</i> | <i>ML</i> | <i>ML</i> | <i>ML</i> | <i>ML</i> | <i>ML</i> |
| ORIGINAL | | | | | | | |
| 1997 | | | | | | | |
| March | 49 | 37 | 31 | 14 | 16 | 4 | 152 |
| April | 48 | 37 | 31 | 16 | 16 | 4 | 152 |
| May | 49 | 39 | 33 | 15 | 16 | 4 | 157 |
| June | 47 | 37 | 30 | 15 | 16 | 4 | 149 |
| July | 52 | 37 | 33 | 15 | 16 | 4 | 157 |
| August | 52 | 39 | 32 | 14 | 16 | 4 | 157 |
| September | 50 | 37 | 32 | 15 | 15 | 4 | 152 |
| October | 51 | 39 | 32 | 16 | 17 | 4 | 159 |
| November | 49 | 35 | 30 | 15 | 15 | 4 | 148 |
| December | 50 | 36 | 31 | 16 | 16 | 4 | 153 |
| 1998 | | | | | | | |
| January | 47 | 36 | 32 | 15 | 16 | 4 | 149 |
| February | 44 | 34 | 29 | 14 | 15 | 4 | 140 |
| March | 50 | 38 | 32 | 16 | 17 | 4 | 156 |
| SEASONALLY ADJUSTED | | | | | | | |
| 1997 | | | | | | | |
| March | 47 | 37 | 31 | 14 | 16 | 4 | 150 |
| April | 48 | 37 | 31 | 16 | 17 | 4 | 153 |
| May | 48 | 37 | 32 | 14 | 15 | 4 | 150 |
| June | 48 | 37 | 31 | 15 | 16 | 4 | 151 |
| July | 51 | 36 | 31 | 15 | 16 | 4 | 153 |
| August | 51 | 38 | 32 | 14 | 16 | 4 | 155 |
| September | 51 | 37 | 32 | 15 | 16 | 4 | 154 |
| October | 50 | 38 | 31 | 15 | 16 | 4 | 154 |
| November | 50 | 37 | 31 | 15 | 16 | 4 | 152 |
| December | 51 | 37 | 31 | 15 | 16 | 4 | 155 |
| 1998 | | | | | | | |
| January | 48 | 37 | 32 | 15 | 15 | 4 | 150 |
| February | 48 | 37 | 31 | 15 | 16 | 4 | 151 |
| March | 48 | 37 | 31 | 16 | 16 | 4 | 152 |
| TREND ESTIMATES | | | | | | | |
| 1997 | | | | | | | |
| March | 48 | 37 | 31 | 15 | 16 | 4 | 151 |
| April | 48 | 37 | 31 | 15 | 16 | 4 | 151 |
| May | 48 | 37 | 31 | 15 | 16 | 4 | 151 |
| June | 49 | 37 | 31 | 15 | 16 | 4 | 152 |
| July | 50 | 37 | 32 | 15 | 16 | 4 | 153 |
| August | 50 | 37 | 32 | 15 | 16 | 4 | 154 |
| September | 51 | 37 | 32 | 15 | 16 | 4 | 154 |
| October | 50 | 37 | 32 | 15 | 16 | 4 | 154 |
| November | 50 | 37 | 31 | 15 | 16 | 4 | 153 |
| December | 49 | 37 | 31 | 15 | 16 | 4 | 153 |
| 1998 | | | | | | | |
| January | 49 | 37 | 31 | 15 | 16 | 4 | 152 |
| February | 48 | 37 | 31 | 15 | 16 | 4 | 151 |
| March | 48 | 37 | 31 | 15 | 16 | 4 | 151 |

(a) For more information refer to paragraph 14 of the Explanatory Notes.

Source: Original series data from Australian Dairy Corporation

BROKERS AND DEALERS RECEIVALS OF TAXABLE WOOL(a): All Series

| Month | New South Wales | Victoria | Queensland | South Australia | Western Australia | Tasmania | Australia | % of total received by brokers |
|---------------------|-----------------|----------|------------|-----------------|-------------------|----------|-----------|--------------------------------|
| | tonnes | tonnes | tonnes | tonnes | tonnes | tonnes | tonnes | tonnes |
| ORIGINAL | | | | | | | | |
| 1997 | | | | | | | | |
| April | 14 497 | 9 397 | 5 652 | 8 343 | 13 833 | 945 | 52 668 | 82.2 |
| May | 13 537 | 8 830 | 4 614 | 5 217 | 6 962 | 1 620 | 40 780 | 80.0 |
| June | 12 569 | 6 707 | 4 436 | 3 513 | 5 830 | 1 106 | 34 161 | 78.4 |
| July | 17 002 | 10 183 | 5 625 | 7 071 | 11 119 | 1 352 | 52 352 | 79.7 |
| August | 19 328 | 14 203 | 5 111 | 9 754 | 15 839 | 1 612 | 65 847 | 82.9 |
| September | 21 622 | 17 819 | 4 536 | 10 408 | 18 326 | 1 570 | 74 280 | 83.0 |
| October | 23 506 | 24 697 | 3 674 | 13 435 | 22 909 | 2 224 | 90 445 | 83.9 |
| November | 19 065 | 20 763 | 2 398 | 10 196 | 14 065 | 2 553 | 69 040 | 80.2 |
| December | 11 645 | 16 591 | 2 080 | 5 190 | 7 328 | 1 959 | 44 794 | 76.3 |
| 1998 | | | | | | | | |
| January | 11 354 | 9 458 | 2 522 | 3 896 | 10 338 | 1 576 | 39 144 | 81.8 |
| February | 10 914 | 8 402 | 3 074 | 5 243 | 15 137 | 728 | 43 499 | 84.1 |
| March | 14 574 | 9 622 | 4 749 | 8 096 | 15 504 | 656 | 53 201 | 84.7 |
| April | 10 791 | 7 369 | 3 176 | 6 854 | 10 886 | 809 | 39 884 | 81.7 |
| SEASONALLY ADJUSTED | | | | | | | | |
| 1997 | | | | | | | | |
| April | 20 043 | 15 855 | 5 657 | 9 863 | 16 352 | 1 741 | 69 512 | .. |
| May | 17 750 | 16 242 | 4 135 | 9 495 | 14 145 | 1 401 | 63 170 | .. |
| June | 17 275 | 17 266 | 3 799 | 8 930 | 16 388 | 2 035 | 65 693 | .. |
| July | 19 054 | 17 696 | 4 182 | 10 875 | 14 451 | 1 814 | 68 071 | .. |
| August | 15 821 | 13 070 | 3 754 | 6 629 | 10 491 | 1 527 | 51 292 | .. |
| September | 13 588 | 10 812 | 3 638 | 5 848 | 10 706 | 1 370 | 45 961 | .. |
| October | 15 666 | 13 235 | 3 785 | 7 107 | 13 936 | 1 609 | 55 339 | .. |
| November | 16 099 | 12 724 | 4 483 | 7 908 | 12 674 | 1 357 | 55 246 | .. |
| December | 14 727 | 13 523 | 4 793 | 8 100 | 14 595 | 1 678 | 57 417 | .. |
| 1998 | | | | | | | | |
| January | 15 747 | 11 420 | 3 786 | 7 457 | 13 406 | 1 452 | 53 268 | .. |
| February | 12 104 | 10 857 | 3 309 | 6 390 | 13 618 | 950 | 47 227 | .. |
| March | 15 258 | 12 342 | 3 956 | 7 846 | 13 206 | 1 451 | 54 058 | .. |
| April | 15 318 | 12 828 | 3 179 | 8 091 | 12 858 | 1 517 | 53 791 | .. |
| TREND ESTIMATES | | | | | | | | |
| 1997 | | | | | | | | |
| April | 17 571 | 15 671 | 4 145 | 9 021 | 15 041 | 1 637 | 63 086 | .. |
| May | 17 852 | 16 035 | 4 207 | 9 282 | 14 905 | 1 709 | 63 990 | .. |
| June | 17 708 | 15 943 | 4 174 | 9 123 | 14 338 | 1 728 | 63 014 | .. |
| July | 17 175 | 15 358 | 4 042 | 8 608 | 13 550 | 1 694 | 60 427 | .. |
| August | 16 485 | 14 466 | 3 937 | 7 981 | 12 850 | 1 636 | 57 355 | .. |
| September | 15 790 | 13 491 | 3 923 | 7 472 | 12 475 | 1 573 | 54 724 | .. |
| October | 15 300 | 12 696 | 4 034 | 7 195 | 12 550 | 1 515 | 53 290 | .. |
| November | 15 012 | 12 272 | 4 126 | 7 179 | 12 952 | 1 457 | 52 999 | .. |
| December | 14 827 | 12 158 | 4 103 | 7 314 | 13 390 | 1 419 | 53 212 | .. |
| 1998 | | | | | | | | |
| January | 14 729 | 12 149 | 3 992 | 7 480 | 13 614 | 1 393 | 53 356 | .. |
| February | 14 622 | 12 087 | 3 820 | 7 556 | 13 576 | 1 369 | 53 030 | .. |
| March | 14 574 | 12 066 | 3 633 | 7 611 | 13 437 | 1 358 | 52 678 | .. |
| April | 14 480 | 11 984 | 3 446 | 7 615 | 13 164 | 1 350 | 52 039 | .. |

(a) For more information refer to paragraphs 15 and 16 of the Explanatory Notes.

LIVESTOCK PRODUCTS: Original

| Month | New South Wales | Victoria | Queensland | South Australia | Western Australia | Tasmania | Australia |
|---|-----------------|----------|------------|-----------------|-------------------|----------|----------------|
| WHOLE MILK INTAKE BY FACTORIES (million litres)(a) | | | | | | | |
| 1994-95 | 1 087 | 5 114 | 741 | 485 | 344 | 436 | 8 206 |
| 1995-96 | 1 115 | 5 482 | 751 | 513 | 342 | 514 | 8 716 |
| 1996-97 | 1 192 | 5 622 | 797 | 535 | 349 | 529 | 9 024 |
| MARKET MILK SALES BY FACTORIES (million litres)(a) | | | | | | | |
| 1994-95 | 605 | 452 | 368 | 167 | 188 | 52 | 1 832 |
| 1995-96 | 611 | 456 | 372 | 163 | 187 | 50 | 1 840 |
| 1996-97 | 576 | 452 | 376 | 173 | 193 | 50 | 1 820 |
| BROKERS AND DEALERS RECEIVALS OF TAXABLE WOOL (tonnes)(a) | | | | | | | |
| 1994-95 | 177 649 | 171 915 | 51 935 | 86 977 | 173 383 | 17 577 | 679 435 |
| 1995-96 | 165 523 | 161 388 | 44 639 | 87 764 | 165 979 | 15 997 | 641 290 |
| 1996-97 | 195 330 | 174 954 | 45 844 | 89 592 | 159 981 | 18 876 | 684 578 |

(a) For more information refer to paragraphs 14 to 16 of the Explanatory Notes.

Source: Original series data from Australian Dairy Corporation.

WHAT IF...? REVISIONS TO TREND ESTIMATES

EFFECT OF NEW SEASONALLY ADJUSTED ESTIMATES ON TREND ESTIMATES

Each time new seasonally adjusted estimates become available, trend estimates are revised (see paragraph 21 of the Explanatory Notes).

TREND REVISIONS

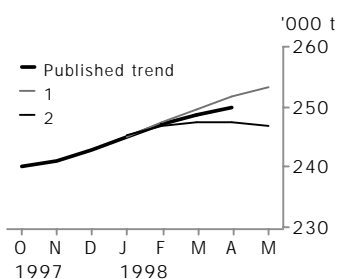
The graphs and tables which follow present the effect of two possible new seasonally adjusted estimates on the previous trend estimates:

1 The May seasonally adjusted estimate is higher than the April estimate by the percentage shown.

2 The May seasonally adjusted estimate is lower than the April estimate by the percentage shown.

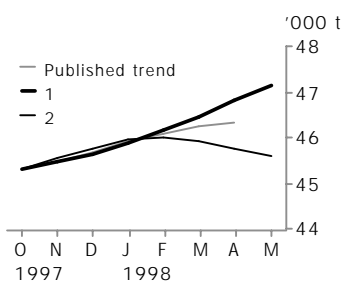
These percentages were chosen because they represent the average absolute monthly percentage change for these series over the last ten years.

RED MEAT PRODUCTION



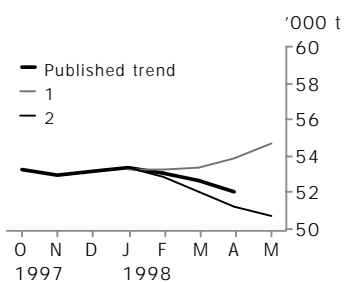
| | TREND AS PUBLISHED | | WHAT IF NEXT QUARTER'S SEASONALLY ADJUSTED ESTIMATE: | | | |
|---------------|--------------------|----------|--|----------|--|----------|
| | number | % change | 1 <i>rises by 3% on Apr 1998</i> | | 2 <i>falls by 3% on Apr 1998</i> | |
| | number | % change | number | % change | number | % change |
| December 1997 | 242 815 | 0.7 | 242 506 | 0.6 | 243 016 | 0.7 |
| January 1998 | 245 064 | 0.9 | 244 906 | 1.0 | 245 160 | 0.9 |
| February 1998 | 247 141 | 0.8 | 247 522 | 1.1 | 246 850 | 0.7 |
| March 1998 | 248 785 | 0.7 | 249 733 | 0.9 | 247 514 | 0.3 |
| April 1998 | 249 890 | 0.4 | 251 659 | 0.8 | 247 475 | 0.0 |
| May 1998 | — | — | 253 228 | 0.6 | 246 916 | -0.2 |

CHICKEN MEAT PRODUCTION



| | TREND AS PUBLISHED | | WHAT IF NEXT QUARTER'S SEASONALLY ADJUSTED ESTIMATE: | | | |
|---------------|--------------------|----------|--|----------|--|----------|
| | number | % change | 1 <i>rises by 4% on Apr 1998</i> | | 2 <i>falls by 4% on Apr 1998</i> | |
| | number | % change | number | % change | number | % change |
| December 1997 | 45 679 | 0.4 | 45 633 | 0.4 | 45 758 | 0.5 |
| January 1998 | 45 905 | 0.5 | 45 877 | 0.5 | 45 939 | 0.4 |
| February 1998 | 46 092 | 0.4 | 46 154 | 0.6 | 45 988 | 0.1 |
| March 1998 | 46 236 | 0.3 | 46 468 | 0.7 | 45 920 | -0.1 |
| April 1998 | 46 325 | 0.2 | 46 804 | 0.7 | 45 772 | -0.3 |
| May 1998 | — | — | 47 146 | 0.7 | 45 589 | -0.4 |

WOOL RECEIVALS



| | TREND AS PUBLISHED | | WHAT IF NEXT QUARTER'S SEASONALLY ADJUSTED ESTIMATE: | | | |
|---------------|--------------------|----------|--|----------|--|----------|
| | number | % change | 1 <i>rises by 9% on Apr 1998</i> | | 2 <i>falls by 9% on Apr 1998</i> | |
| | number | % change | number | % change | number | % change |
| December 1997 | 53 212 | 0.4 | 52 912 | 0.2 | 53 230 | 0.4 |
| January 1998 | 53 356 | 0.3 | 53 229 | 0.6 | 53 387 | 0.3 |
| February 1998 | 53 030 | -0.6 | 53 241 | 0.0 | 52 821 | -1.1 |
| March 1998 | 52 678 | -0.7 | 53 389 | 0.3 | 52 003 | -1.5 |
| April 1998 | 52 039 | -1.2 | 53 863 | 0.9 | 51 251 | -1.4 |
| May 1998 | — | — | 54 691 | 1.5 | 50 749 | -1.0 |

WHAT IF...? REVISIONS TO TREND ESTIMATES

WHOLE MILK INTAKE BY FACTORIES

Readers should exercise care when interpreting trend estimates. The last six trend estimates, in particular, are likely to be revised when new seasonally adjusted estimates become available.

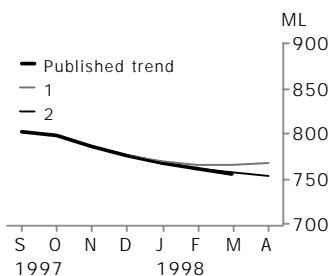
TREND REVISIONS

The graph and tables which follow present the effect of two possible scenarios on the previous trend estimates:

- 1** The April seasonally adjusted estimate is higher than the March estimate by:
 - +2% for whole milk intake by factories.
- 2** The April seasonally adjusted estimate is lower than the March estimate by:
 - -2% for whole milk intake by factories.

These percentages were chosen because they represent the average absolute monthly percentage change for these series over the last ten years.

WHOLE MILK INTAKE BY FACTORIES



| | TREND AS PUBLISHED | | WHAT IF NEXT QUARTER'S SEASONALLY ADJUSTED ESTIMATE: | | | |
|---------------|--------------------|----------|--|----------|--|----------|
| | number | % change | 1 <i>rises by 2% on Mar 1998</i> | % change | 2 <i>falls by 2% on Mar 1998</i> | % change |
| November 1997 | 786 | -1.3 | 785 | -1.4 | 786 | -1.3 |
| December 1997 | 776 | -1.3 | 775 | -1.3 | 776 | -1.3 |
| January 1998 | 767 | -1.1 | 769 | -0.9 | 767 | -1.1 |
| February 1998 | 761 | -0.8 | 766 | -0.4 | 761 | -0.8 |
| March 1998 | 756 | -0.6 | 766 | 0.0 | 757 | -0.5 |
| April 1998 | — | — | 768 | 0.2 | 754 | -0.4 |

EXPLANATORY NOTES

INTRODUCTION

- 1** This publication contains information (preliminary where indicated) on livestock slaughterings, meat production, stocks of frozen meat, exports of live sheep and live cattle, exports of fresh, frozen and processed meat, and whole milk intake by factories, market milk sales by factories and receivals of taxable wool by wool brokers and dealers.
- 2** The figures shown in this publication have been revised where necessary and as a consequence may not agree with similar data shown in previous publications.
- 3** Where figures have been rounded, discrepancies may occur between sums of the component items and totals.
- 4** Unless indicated otherwise, Australian totals include data for all States and both Territories.

LIVESTOCK SLAUGHTERINGS AND MEAT PRODUCTION

- 5** The statistics on slaughterings and meat production are based on a monthly collection from abattoirs and other major slaughtering establishments and include estimates of animals slaughtered on farms and by country butchers and other small slaughtering establishments.
- 6** Cattle slaughterings in the Australian Capital Territory and the Northern Territory (including domesticated buffaloes) and the respective meat produced, are included in the Australian totals in tables 1–9 and 11. Red meat is shown in carcass weight and excludes offal.
- 7** Care should be taken when using this information as the figures only relate to slaughterings for human consumption and do not include animals condemned or those killed for boiling down.
- 8** Poultry slaughterings and meat produced statistics have been compiled from returns supplied by commercial poultry slaughtering establishments and comprise boilers, fryers and roasters. Many small producers are excluded from the collection; however, the statistics represent a high level of coverage. Tasmanian data are excluded from the Australian total.
- 9** Chicken meat is shown in dressed weight of whole birds, pieces and giblets. Some slaughterings and meat production statistics for 'Ducks and Drakes' and 'Other Fowls and Turkeys' are available by contacting the ABS on Hobart 03 6222 5793 or by writing to GPO Box 66a, Hobart TAS 7001 (Attention: Agriculture Section).

STOCKS OF FROZEN MEAT

- 10** Table 20 shows stocks of frozen meat held in cold stores registered to handle meat for export and includes meat passed for export, canning and other purposes. It also includes boneless and carcass meat. Buffalo meat is included in beef (Source: Australian Meat and Livestock Corporation).

EXPORTS OF FRESH, FROZEN AND PROCESSED MEAT

- 11** Table 21 shows exports of fresh, frozen and processed meat, excluding offal. Factors can be applied to beef, veal, mutton and lamb bone-out figures to derive bone-in carcass weight which, when added to bone-in figures, shows total exports in carcass weight. The factor for beef and veal is 1.5 and for mutton and lamb, 2.0 (Source: Australian Meat and Livestock Corporation).
- 12** Beef also includes buffalo meat. Bacon and ham shown is the cured carcass weight of smoked or cooked bacon and ham. It also includes the stated net weight of packs of canned bacon and ham. Canned meat is shown as the canned weight and excludes canned bacon and ham.

EXPLANATORY NOTES

- LIVE SHEEP AND CATTLE EXPORTS **13** These tables contain statistics of the number of live sheep and cattle exported, the gross weight, gross value and unit value. The unit value is obtained by dividing the gross value by the number of animals exported. Sheep and cattle exported for breeding are excluded.
- MILK **14** Tables 2, 23, 24 and 26 contain statistics collected by the Australian Dairy Corporation (ADC). Whole milk intake by factories includes the whole milk equivalent of farm cream intake. Market milk sales includes white, flavoured, high and low fat milk and uht milk.
- WOOL RECEIVALS **15** The statistics in Tables 25 and 26 show the amount of taxable wool received by brokers and purchased by dealers from wool producers. It excludes wool received by brokers on which tax has already been paid by other dealers (private buyers) or brokers.
- 16** The information shown is on the basis of the State in which wool has actually been received and does not necessarily reflect the production of wool in that State.
- SEASONAL ADJUSTMENT **17** Seasonal adjustment is a means of removing the estimated effects of normal seasonal variation from the series so that the effects of other influences can be more clearly recognised.
- 18** In the seasonal adjustment of the livestock estimates, account has been taken of both normal seasonal factors and 'trading-day' effects (arising from the varying length of each month and the varying numbers of Sundays, Mondays, Tuesdays etc. in the month). Adjustments are also made for the effects of change in the date of Easter and Australia Day holidays. Seasonal adjustment does not remove from the series the effect of irregular influences (eg. abnormal weather, industrial disputes).
- 19** The State component series have been seasonally adjusted independently. Therefore, the adjusted components may not add to the Australian Group totals.
- 20** As happens with all seasonally adjusted series, the seasonal factors are reviewed annually to take account of each additional year's data.
- TREND ESTIMATES **21** A trend estimate is obtained by reducing the irregular component from the seasonally adjusted series. In this publication trend estimates are generally derived by applying a 13 term Henderson moving average to the seasonally adjusted series. The 13 term Henderson, (like all Henderson averages) is symmetric, but as the end of a time series is approached, asymmetric forms of the average are applied. While the asymmetric weights enable the trend to be calculated for the latest month, it does result in revisions to the last six estimates as additional observations become available.
- 22** Sensitivity analysis indicates the potential magnitude and direction of revisions created to the last six estimates. It aims to show how a specified movement in the seasonally adjusted data in the next period will affect the trend path of the time series. By showing how sensitive the trend estimates are to the addition of new data, the analysis provides information which can be used in the assessment of the trend's stability.
- 23** For further information, see — *A Guide to Interpreting Time Series – Monitoring "Trends", an Overview* (1348.0) or contact the Assistant Director, Time Series Analysis on 02 6252 6345.

EXPLANATORY NOTES

RELATED PUBLICATIONS

24 Current publications produced by the ABS are listed in the Catalogue of Publications and Products, Australia (1101.0). The ABS also issues, on Tuesdays and Fridays, a Release Advice (1105.0) which lists publications to be released in the next few days. The Catalogue and Release Advice are available from any ABS office.

SYMBOLS AND OTHER USAGES

| | |
|------|----------------|
| ML | million litres |
| n.a. | not available |
| n.p. | not published |
| p | preliminary |
| t | tonnes |
| .. | not applicable |

The ABS publishes a wide range of information on Australia's economic and social conditions. A catalogue of publications and products is available from any of our offices (see below).

INFORMATION CONSULTANCY SERVICES

Information tailored to special needs of clients can be obtained from the Information Consultancy Service available at ABS Offices (see below).

ABS PRODUCTS

A large number of ABS products is available from the ABS Bookshops (see below). The ABS also provides a subscription service – you can telephone the ABS Subscription Service Australia wide toll free on 1300 3663 23.

ELECTRONIC SERVICES

A large range of data is available via on-line services, diskette, magnetic tape, tape cartridge and CD ROM. For more details about our electronic data services, contact any ABS office (see below) or e-mail us at:

- client.services@abs.gov.au

GENERAL SALES AND INQUIRIES

- Sydney 02 9268 4611
 - Melbourne 03 9615 7755
 - Brisbane 07 3222 6351
 - Perth 08 9360 5140
 - Adelaide 08 8237 7400
 - Hobart 03 6222 5800
 - Darwin 08 8943 2111
 - Canberra 02 6252 6627
-
- Information Services, ABS
PO Box 10, Belconnen ACT 2616



2721500004982

ISSN 0728-4047

RRP \$16.00